

Part 2

Indoor Units

- 1. Introduction.....16
- 2. Four-way Cassette Type.....17
- 3. Duct Type.....41
- 4. Ceiling &Floor Type70
- 5. Wall mounted type.....93

1.Introduction

1.1 Indoor unit range

Capacity (kW)											
		2.2	2.8	3.6	4.5	5.6	7.1	8.0	9.0	11.2	14.0
Type											
Four-way Cassette compact	R410A		•	•	•						
Four-way Cassette	R410A					•	•	•	•	•	
Duct type	R410A	•	•	•	•	•	•	•	•	•	•
Floor & Ceiling	R410A			•	•	•	•	•	•	•	•
Wall Mounted	R410A	•	•	•	•	•					
Corresponding horsepower (HP)		0.8	1	1.25	1.7	2	2.5	3	3.2	4	5

A great amount of R410A indoor units including 41 different Models in 5 different series are available for Midea MDV-DIII A/C system, So the Midea MDV-DIII system can easily meet different demand from different customers.

1.2 Main characteristics

Electronic throttle kit



1.2.1 Extremely low noise, 3dB(A) lower compared with which put EXV into the indoor unit case.

1.2.2. Easy maintenance. Being separated from indoor unit, fixed on the body or inside the indoor unit independently, thus it can be replaced easily.

1.2.3 Easy installation, just quick connection by flare nut.

Remark:

1. One electronic Throttle Kit only can be applied to one indoor unit.
2. Electronic Throttle Kit needn't order separately, it has been packed with the indoor units together in the factory.

Four-way cassette type

2.1 Features.....	18
2.2 Specification.....	19
2.3. Dimensions.....	21
2.4. Piping Diagrams.....	22
2.5. Wiring Diagrams.....	23
2.6. Capacity Tables.....	26
2.7. Air Velocity Distributions.....	35
2.8. Functional parts & safety device.....	35
2.9. Sound Levels.....	36
2.10. Explored View.....	37
2.11. Accessories.....	39

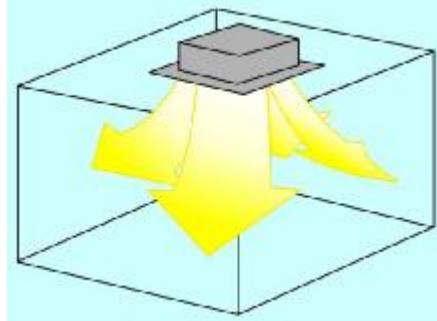
2.1 Features

2.1.1 Low operation noise

- Streamline plate ensures quietness
- Creates natural and comfortable environment

2.1.2 Efficient cooling

- Equal, fast and wide—range cooling



Four-way airflow

2.1.3 The adoption of the most advanced 3- Dimensional Screw fan

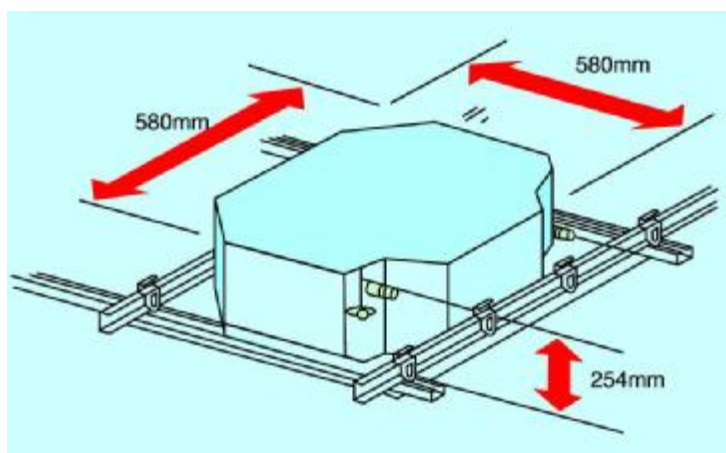
- Reduces the air resistance passing through
- Smooths the air flow
- Makes air speed distribution to the heat exchange uniform



3- Dimensional Screw fan

2.1.4 Improvement for easy installation and maintenance (only available for small four-way cassette)

- Little space is required for installation into a shallow ceiling
- Because of the compactness and weight reduction of the main unit and panel, all Models can be installed without a hoist



The sketch map of installation

2.2 Specifications

Model			MDV-D28Q4/BN1	MDV-D36Q4/BN1	MDV-D45Q4/BN1
Power Supply		Ph-V-Hz	220-240V~,1PH, 50Hz		
Nominal Capacity					
Cooling	Capacity	Btu/h	9000	12000	16000
	Input	W	65	65	75
Heating	Capacity	Btu/h	10000	13500	18000
	Input	W	65	65	75
Electric Parameter					
Max. input consumption		W	85	85	85
Max. current		A	0.35	0.35	0.35
Starting current		A	3.6	3.6	3.6
Indoor Fan Motor					
Model			YDK45-4F	YDK45-4F	YDK45-4F
Type / Brand			Centrifugal fan / Welling		
Input		W	63	63	63
Capacitor		uF	2.5/450v	2.5/450v	2.5/450v
Speed(hi/mi/lo)		r/min	930/830/660		
Indoor noise level (Hi/Mid/Lo)		dB(A)	43/40/37		
Indoor Coil					
a.Number of rows			2	2	2
b.Tube pitch(a)x row pitch(b)		mm	21x13.37	21x13.37	21x13.37
c.Fin spacing		mm	1.3	1.3	1.3
d.Fin type (code)			Hydrophilic Aluminium		
e.Tube outside dia.and type		mm	Φ7.94, Innergroove Tube		
f.Coil length x height x width		mm	1185X210X26.7		
g.Number of circuits			5		
Indoor air flow (Hi/Lo)		m ³ /h	860/760/650		
Technical Specification					
Indoor unit	Dimension (W*H*D)	mm	580×254×580	580×254×580	580×254×580
	Packing (W*H*D)	mm	795x340×745		
	Net/Gross weight	Kg	22/28.8		
Panel	Dimension (W*H*D)	mm	650x30x650	650x30x650	650x30x650
	Packing (W*H*D)	mm	715x115x715	715x115x715	715x115x715
	Net/Gross weight	Kg	3/5	3/5	3/5
Application area		m ²	18-36	28-56	22-45
Piping size	Liquid/ Gas side	mm(inch)	φ6.35 (1/4'')/φ12.7 (1/2'')		
Drain Hole		mm	25		
Qty per 20'/40'/40'HQ		Pieces	119/249/252		

Model		MDV-D56Q4/N1	MDV-D71Q4/N1	MDV-D80Q4/N1	MDV-D90Q4/N1	MDV-D112Q4/N1	
Power Supply(Ph-V-Hz)		220-240V~, 1Ph, 50Hz					
Nominal Capacity							
Cooling	Capacity	Btu/h	18000	24000	28000	30000	40000
	Input	W	100	100	100	130	145
Heating	Capacity	Btu/h	19800	31000	31000	33000	44000
	Input	W	100	100	100	130	145
Electric Parameter							
Max. Input consumption		W	126	126	126	170	210
Max. Current		A	0.6	0.77	0.77	1.1	1.1
Starting current		A	3.6	4.2	4.2	6	6
Indoor Motor							
Model			YDK25-6	YDK42-6	YDK42-6	YDK56-6G	YDK56-6G
Type		Centrifugal fan					
Brand		WeiLing					
Input		W	71	83	83	110	110
Capacitor		uF	4uF/450V	4.0/450v	4.0/450v	3.5/450v	3.5/450v
Speed(hi/mi/lo)		r/min	650/600/550	630/550/470	630/550/470	620/510/470	680/510/470
Indoor noise level (Hi/Mid/Lo)		dB(A)	44/42/38	46/44/42	46/44/42	48/46/44	48/46/44
Indoor Coil							
a.Number of rows			2	2	2	2	2
b.Tube pitch(a)x row pitch(b)		mm	25.4X22	25.4X22	25.4X22	25.4X22	25.4X22
c.Fin spacing		mm	1.3	1.3	1.3	1.3	1.3
d.Fin type (code)		Hydrophilic Aluminium					
e.Tube outside dia.and type		mm	Φ7 Innergroove Tube				
f.Coil length x height x width		mm	2000X170X27	2000X170X27	2000X170X27	2000X250X27	2000X250X27
g.Number of circuits			4	4	4	6	6
Indoor air flow (Hi/Mi/Lo)		m ³ /h	1000/920/830	1200/1080/970	1200/1080/970	1320/1210/1110	1860/1720/1610
Technical Specification							
Indoor unit	Dimension (W*H*D)	mm	840×240×840	840×240×840	840×240×840	840×310×840	840×310×840
	Packing (W*H*D)	mm	955*260*955			955*325*955	
	Net/Gross weight	Kg	28/34	28/34	28/34	35.2/41.2	
Panel	Dimension (W*H*D)	mm	950×40×950	950×40×950	950×40×950	950×40×950	950×40×950
	Packing (W*H*D)	mm	1030×145×1030	1030×145×1030	1030×145×1030	1030×145×1030	1030×145×1030
	Net/Gross weight	Kg	6/11	6/11	6/11	6/11	6/11
Application area		m ²	35-71	40-80	45-90	56-112	70-140
Refrigerant size	Liquid/ Gas side	mm(inch)	φ9.53 (3/8')/ φ16 (5/8')				
Drain Hole		mm	32				
Qty per 20'/40'/40'HQ		Pieces	62/132/135				

Notes: 1. Nominal cooling capacities are based on the following conditions: indoor temp: 27°CDB,19°CWB, outdoor temp.:35°CDB,equivalent ref.Piping: 8m(horizontal)

2. Nominal heating capacities are based on the following conditions: 20°CDB, outdoor temp.: 7°CDB, 6°CWB, equivalent ref. Piping: 8m (horizontal)

2.3 Dimension

2.3.1 MDV-D28Q4/BN1 MDV-D36Q4/BN1 MDV-D45Q4/BN1

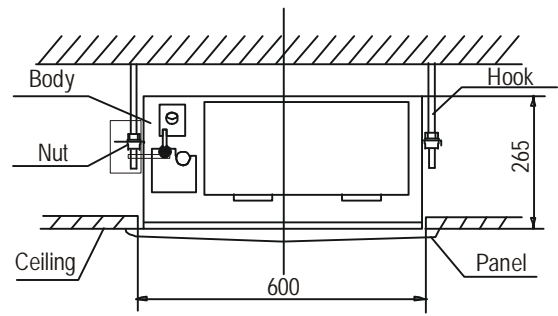
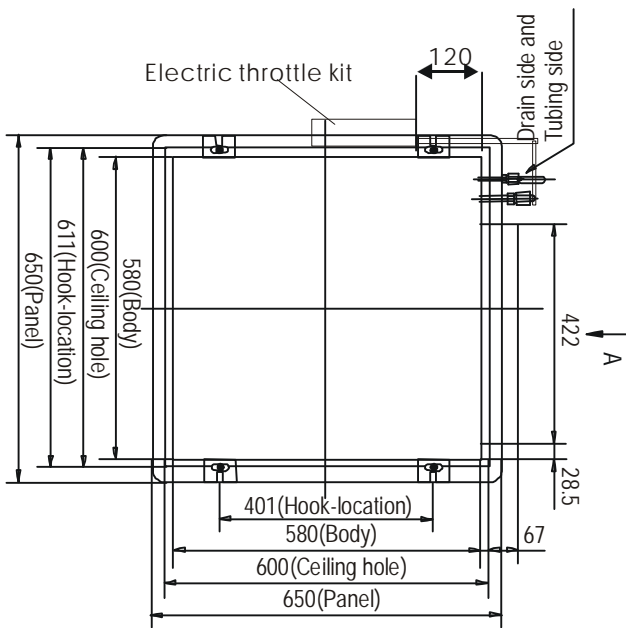
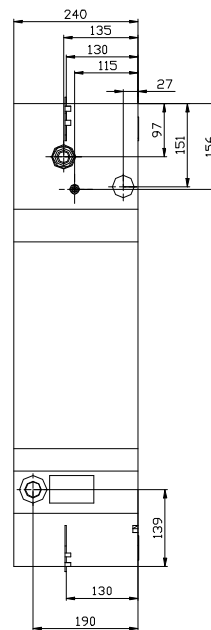
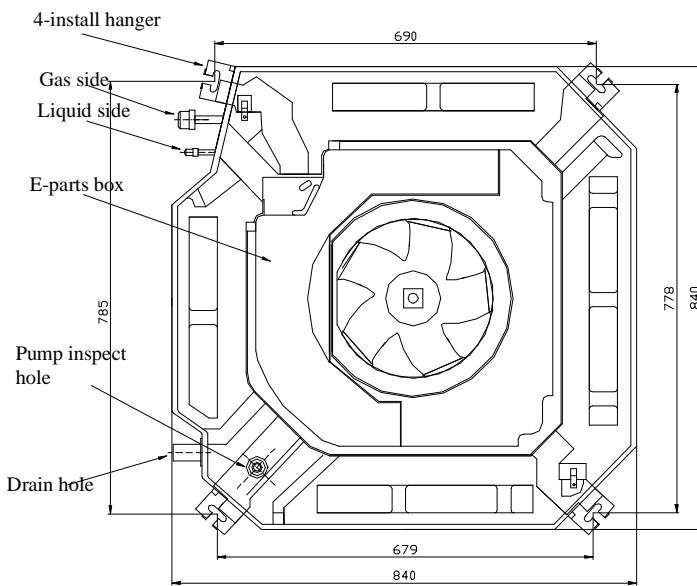
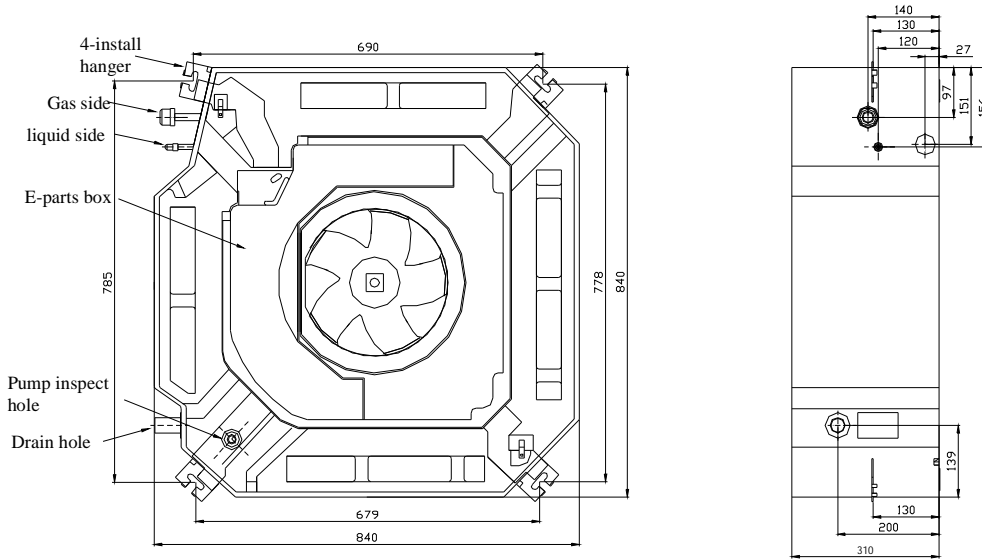


Chart 4

2.3.2 MDV-D56Q4/N1 MDV-D71Q4/N1 MDV-D80Q4/N1

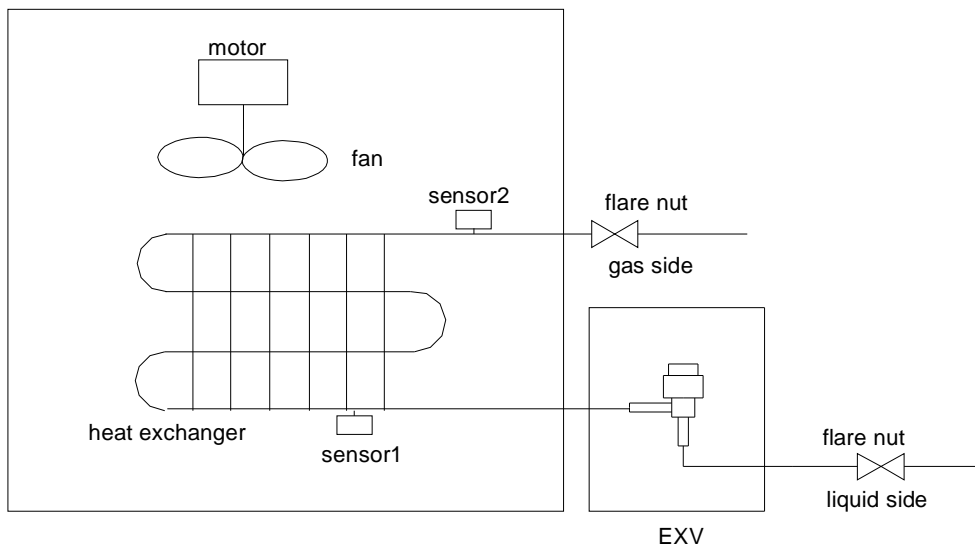


2.3.3 MDV-D90Q₄/N1 MDV-D112Q₄/N1

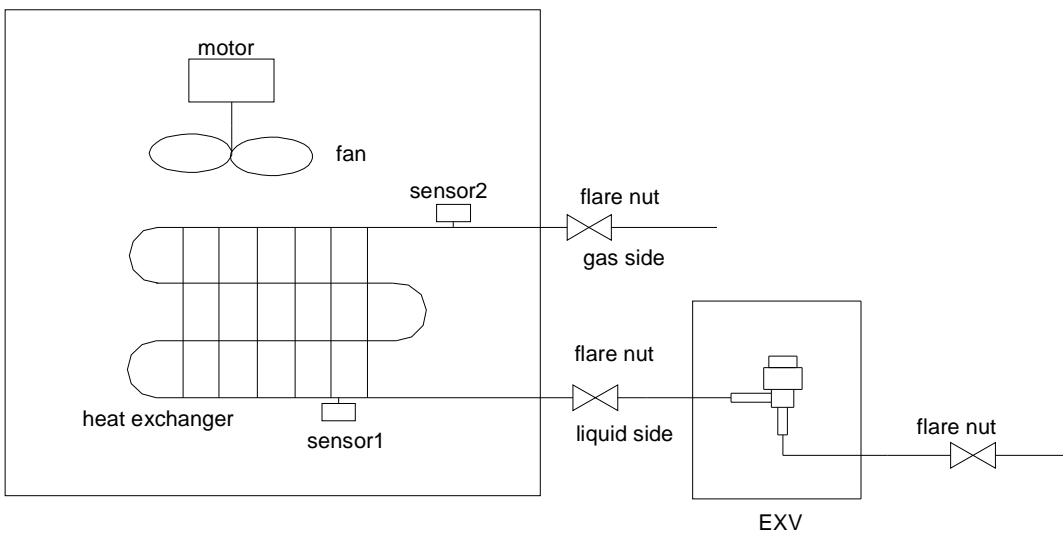


2.4 Piping diagrams

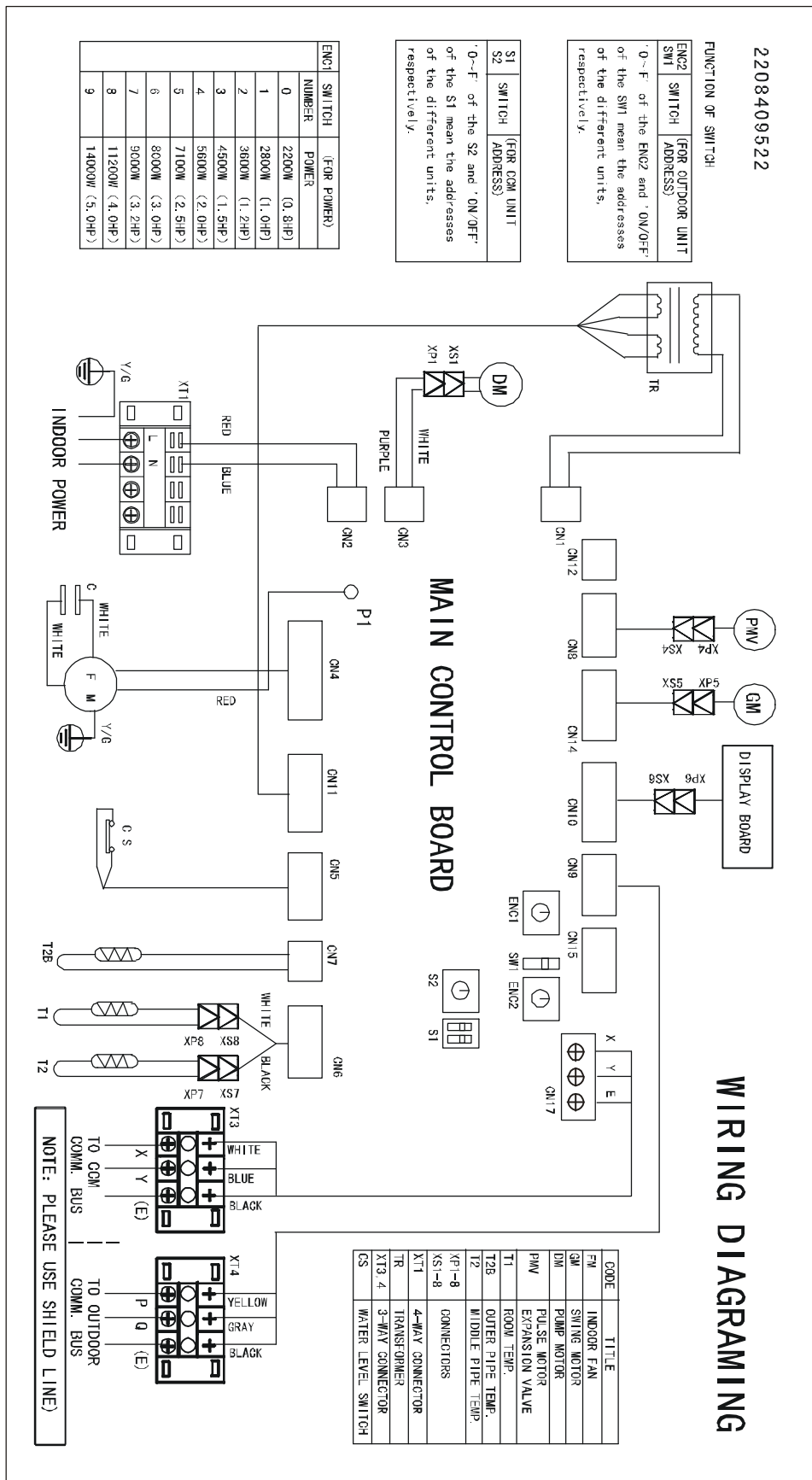
2.4.1 MDV-D28Q₄/BN1 MDV-D36Q₄/BN1 MDV-D45Q₄/BN1



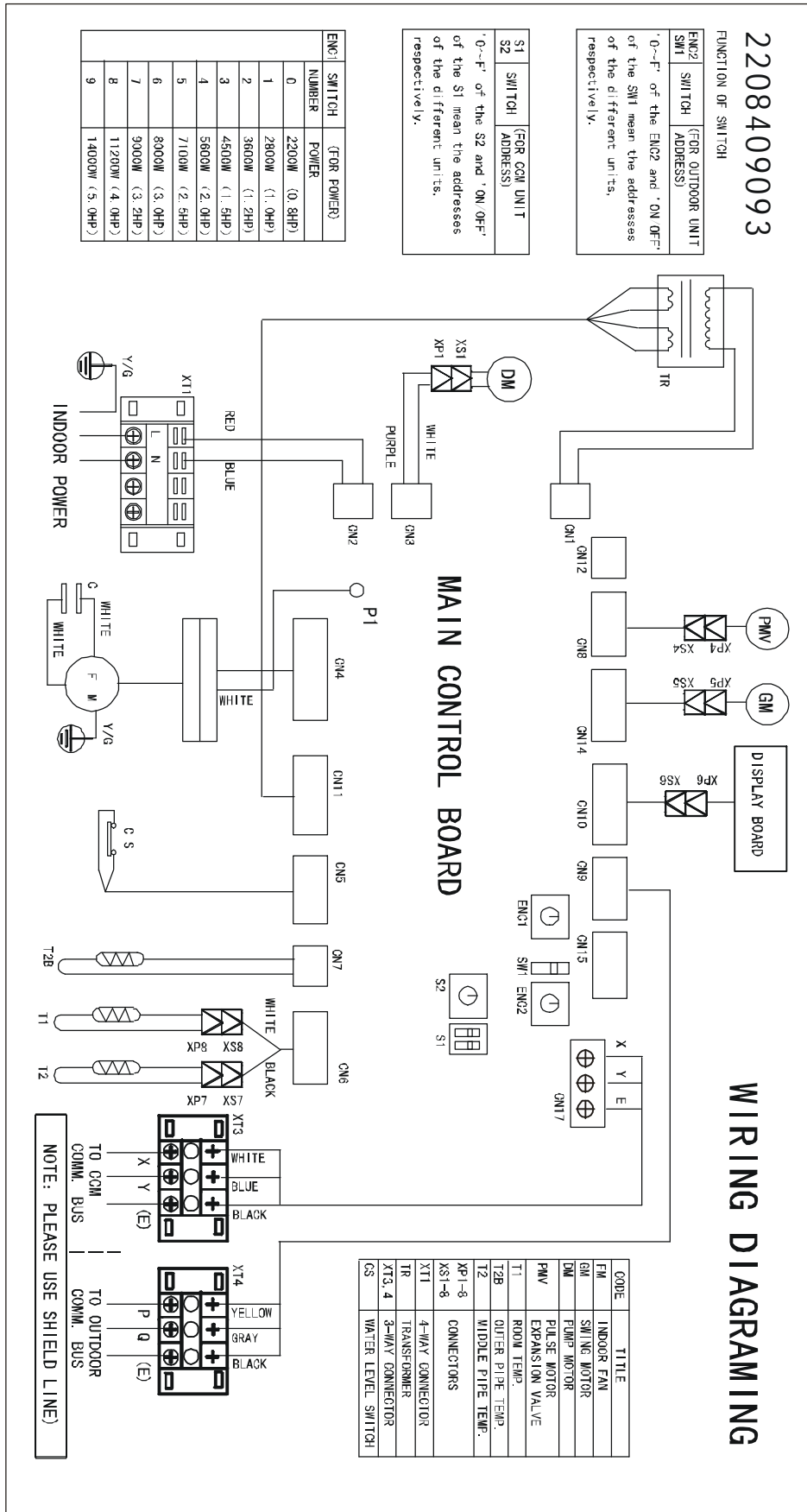
2.4.2 MDV-D56Q₄/N1 MDV-D71Q₄/N1 MDV-D80Q₄/N1 MDV-D90Q₄/N1 MDV-D112Q₄/N1



MDV-D56Q4/N1 MDV-D71Q4/N1 MDV-D80Q4/N1



MDV-D90Q₄/N1 MDV-D112Q₄/N1



2.6 Capacity table

2.6.1 Cooling

TC: total capacity SHC: sensible capacity

Indoor Unit size(kW)	Outdoor temperature (°c ,DB)	Indoor temperature (°c,WB)													
		14		16		18		19		20		22		24	
		TC	SHC	TC	SHC	TC	SHC	TC	SHC	TC	SHC	TC	SHC	TC	SHC
		kW	kW	kW	kW	kW	kW	kW	kW	kW	kW	kW	kW	kW	kW
2.8	10	2.0	1.7	2.4	1.8	2.8	2.0	3.0	2.1	3.2	2.2	3.6	2.3	4.0	2.6
	12	2.0	1.7	2.4	1.8	2.8	2.0	3.0	2.1	3.2	2.2	3.6	2.3	4.0	2.6
	14	2.0	1.7	2.4	1.8	2.8	2.0	3.0	2.1	3.2	2.2	3.6	2.3	4.0	2.6
	16	2.0	1.7	2.4	1.8	2.8	2.0	3.0	2.1	3.2	2.2	3.6	2.3	4.0	2.6
	18	2.0	1.7	2.4	1.8	2.8	2.0	3.0	2.1	3.2	2.2	3.6	2.3	4.0	2.6
	20	2.0	1.7	2.4	1.8	2.8	2.0	3.0	2.1	3.2	2.2	3.6	2.3	4.0	2.6
	21	2.0	1.7	2.4	1.8	2.8	2.0	3.0	2.1	3.2	2.2	3.6	2.3	4.0	2.6
	23	2.0	1.7	2.4	1.8	2.8	2.0	3.0	2.1	3.2	2.2	3.6	2.3	4.0	2.6
	25	2.0	1.7	2.4	1.8	2.8	2.0	3.0	2.1	3.0	2.2	3.6	2.3	4.0	2.6
	27	2.0	1.7	2.4	1.8	2.8	2.0	3.0	2.1	3.0	2.2	3.6	2.3	4.0	2.6
	29	2.0	1.7	2.4	1.8	2.8	2.0	3.0	2.1	3.0	2.2	3.6	2.3	4.0	2.6
	31	2.0	1.7	2.4	1.8	2.8	2.0	3.0	2.1	3.0	2.2	3.6	2.3	4.0	2.6
	33	1.9	1.6	2.3	1.7	2.7	1.9	2.9	2.0	3.0	2.1	3.5	2.2	3.9	2.4
	35	1.9	1.6	2.3	1.7	2.7	1.9	2.9	2.0	2.8	2.1	3.5	2.2	3.9	2.4
	37	1.9	1.6	2.3	1.7	2.7	1.9	2.9	2.0	2.8	2.1	3.5	2.2	3.9	2.4
	39	1.9	1.6	2.3	1.7	2.7	1.9	2.9	2.0	2.8	2.1	3.5	2.2	3.9	2.4
3.6	10	2.8	2.5	3.2	2.7	3.6	2.9	3.8	3.0	4.0	3.1	4.4	3.2	4.8	3.3
	12	2.8	2.5	3.2	2.7	3.6	2.9	3.8	3.0	4.0	3.1	4.4	3.2	4.8	3.3
	14	2.8	2.5	3.2	2.7	3.6	2.9	3.8	3.0	4.0	3.1	4.4	3.2	4.8	3.3
	16	2.8	2.5	3.2	2.7	3.6	2.9	3.8	3.0	4.0	3.1	4.4	3.2	4.8	3.3
	18	2.8	2.5	3.2	2.7	3.6	2.9	3.8	3.0	4.0	3.1	4.4	3.2	4.8	3.3
	20	2.8	2.5	3.2	2.7	3.6	2.9	3.8	3.0	4.0	3.1	4.4	3.2	4.8	3.3
	21	2.8	2.5	3.2	2.7	3.6	2.9	3.8	3.0	4.0	3.1	4.4	3.2	4.8	3.3
	23	2.8	2.5	3.2	2.7	3.6	2.9	3.8	3.0	4.0	3.1	4.4	3.2	4.8	3.3
	25	2.8	2.5	3.2	2.7	3.6	2.9	3.8	3.0	3.8	3.1	4.4	3.2	4.8	3.3
	27	2.8	2.5	3.2	2.7	3.6	2.9	3.8	3.0	3.8	3.1	4.4	3.2	4.8	3.3
	29	2.8	2.5	3.2	2.7	3.6	2.9	3.8	3.0	3.8	3.1	4.4	3.2	4.8	3.3
	31	2.7	2.4	3.1	2.6	3.5	2.8	3.7	2.9	3.8	3.0	4.3	3.1	4.7	3.2
	33	2.7	2.4	3.1	2.6	3.5	2.8	3.7	2.9	3.8	3.0	4.3	3.1	4.7	3.2
	35	2.7	2.4	3.1	2.6	3.5	2.8	3.7	2.9	3.6	3.0	4.3	3.1	4.7	3.2
	37	2.7	2.4	3.1	2.6	3.5	2.8	3.7	2.9	3.6	3.0	4.3	3.1	4.7	3.2
	39	2.7	2.4	3.1	2.6	3.5	2.8	3.7	2.9	3.6	3.0	4.3	3.1	4.7	3.2

TC: total capacity SHC: sensible capacity

Indoor Unit size(kW)	Outdoor temperature (°c ,DB)	Indoor temperature (°c,WB)													
		14		16		18		19		20		22		24	
		TC	SHC	TC	SHC	TC	SHC	TC	SHC	TC	SHC	TC	SHC	TC	SHC
		kW	kW	kW	kW	kW	kW	kW	kW	kW	kW	kW	kW	kW	kW
4.5	10	3.3	3.0	3.9	3.3	4.4	3.7	4.8	3.8	5.1	3.9	5.6	4.0	6.2	4.1
	12	3.3	3.0	3.9	3.3	4.4	3.7	4.8	3.8	5.1	3.9	5.6	4.0	6.2	4.1
	14	3.3	3.0	3.9	3.3	4.4	3.7	4.8	3.8	5.1	3.9	5.6	4.0	6.2	4.1
	16	3.3	3.0	3.9	3.3	4.4	3.7	4.8	3.8	5.1	3.9	5.6	4.0	6.2	4.1
	18	3.3	3.0	3.9	3.3	4.4	3.7	4.8	3.8	5.1	3.9	5.6	4.0	6.2	4.1
	20	3.3	3.0	3.9	3.3	4.4	3.7	4.8	3.8	5.1	3.9	5.6	4.0	6.2	4.1
	21	3.2	2.9	3.8	3.2	4.3	3.6	4.7	3.7	5.0	3.8	5.5	4.0	6.1	4.1
	23	3.2	2.9	3.8	3.2	4.3	3.6	4.7	3.7	5.0	3.8	5.5	4.0	6.1	4.1
	25	3.2	2.9	3.8	3.2	4.3	3.6	4.7	3.7	5.0	3.8	5.5	4.0	6.1	4.1
	27	3.2	2.9	3.8	3.2	4.3	3.6	4.7	3.7	5.0	3.8	5.5	4.0	6.1	4.1
	29	3.2	2.9	3.8	3.2	4.3	3.6	4.7	3.7	4.7	3.8	5.5	4.0	6.1	4.1
	31	3.2	2.9	3.8	3.2	4.3	3.6	4.7	3.7	4.7	3.8	5.5	4.0	6.1	4.1
	33	3.2	2.9	3.8	3.2	4.3	3.6	4.7	3.7	4.7	3.8	5.5	4.0	6.1	4.1
	35	3.1	2.8	3.7	3.1	4.2	3.5	4.6	3.6	4.5	3.7	5.4	3.9	6.0	4.0
	37	3.1	2.8	3.7	3.1	4.2	3.5	4.6	3.6	4.5	3.7	5.4	3.9	6.0	4.0
39	3.1	2.8	3.7	3.1	4.2	3.5	4.6	3.6	4.5	3.7	5.3	3.8	5.9	3.9	
5.6	10	4.3	3.7	4.9	3.9	5.5	4.2	5.8	4.3	6.1	4.4	6.7	4.5	7.3	4.6
	12	4.3	3.7	4.9	3.9	5.5	4.2	5.8	4.3	6.1	4.4	6.7	4.5	7.3	4.6
	14	4.3	3.7	4.9	3.9	5.5	4.2	5.8	4.3	6.1	4.4	6.7	4.5	7.3	4.6
	16	4.3	3.7	4.9	3.9	5.5	4.2	5.8	4.3	6.1	4.4	6.7	4.5	7.3	4.6
	18	4.3	3.7	4.9	3.9	5.5	4.2	5.8	4.3	6.1	4.4	6.7	4.5	7.3	4.6
	20	4.3	3.7	4.9	3.9	5.5	4.2	5.8	4.3	6.1	4.4	6.7	4.5	7.3	4.6
	21	4.3	3.7	4.9	3.9	5.5	4.2	5.8	4.3	6.0	4.4	6.7	4.5	7.3	4.6
	23	4.3	3.7	4.9	3.9	5.5	4.2	5.8	4.3	6.0	4.4	6.7	4.5	7.3	4.6
	25	4.3	3.7	4.9	3.9	5.5	4.2	5.8	4.3	6.0	4.4	6.7	4.5	7.3	4.6
	27	4.3	3.7	4.9	3.9	5.5	4.2	5.8	4.3	5.8	4.4	6.7	4.5	7.3	4.6
	29	4.3	3.7	4.9	3.9	5.5	4.2	5.8	4.3	5.8	4.4	6.7	4.5	7.3	4.6
	31	4.3	3.7	4.9	3.9	5.5	4.2	5.8	4.3	5.8	4.4	6.7	4.5	7.3	4.6
	33	4.2	3.6	4.8	3.8	5.4	4.1	5.7	4.2	5.8	4.3	6.6	4.4	7.2	4.5
	35	4.2	3.6	4.8	3.8	5.4	4.1	5.7	4.2	5.6	4.3	6.6	4.4	7.2	4.5
	37	4.2	3.6	4.8	3.8	5.4	4.1	5.7	4.2	5.6	4.3	6.6	4.4	7.2	4.5
39	4.2	3.6	4.8	3.8	5.4	4.1	5.7	4.2	5.6	4.3	6.6	4.4	7.2	4.5	

TC: total capacity SHC: sensible capacity

Indoor Unit size(kW)	Outdoor temperature (°c ,DB)	Indoor temperature (°c,WB)													
		14		16		18		19		20		22		24	
		TC	SHC	TC	SHC	TC	SHC	TC	SHC	TC	SHC	TC	SHC	TC	SHC
		kW	kW	kW	kW	kW	kW	kW	kW	kW	kW	kW	kW	kW	kW
7.1	10	5.3	4.7	6.1	5.1	6.9	5.4	7.3	5.6	7.7	5.8	8.5	6.0	9.3	6.2
	12	5.3	4.7	6.1	5.1	6.9	5.4	7.3	5.6	7.7	5.8	8.5	6.0	9.3	6.2
	14	5.3	4.7	6.1	5.1	6.9	5.4	7.3	5.6	7.7	5.8	8.5	6.0	9.3	6.2
	16	5.3	4.7	6.1	5.1	6.9	5.4	7.3	5.6	7.5	5.8	8.5	6.0	9.3	6.2
	18	5.3	4.7	6.1	5.1	6.9	5.4	7.3	5.6	7.5	5.8	8.5	6.0	9.3	6.2
	20	5.3	4.7	6.1	5.1	6.9	5.4	7.3	5.6	7.5	5.8	8.5	6.0	9.3	6.2
	21	5.3	4.7	6.1	5.1	6.9	5.4	7.3	5.6	7.5	5.8	8.5	6.0	9.3	6.2
	23	5.3	4.7	6.1	5.1	6.9	5.4	7.3	5.6	7.5	5.8	8.5	6.0	9.3	6.2
	25	5.3	4.7	6.1	5.1	6.9	5.4	7.3	5.6	7.5	5.8	8.5	6.0	9.3	6.2
	27	5.3	4.7	6.1	5.1	6.9	5.4	7.3	5.6	7.5	5.8	8.5	6.0	9.3	6.2
	29	5.3	4.7	6.1	5.1	6.9	5.4	7.3	5.6	7.3	5.8	8.5	6.0	9.3	6.2
	31	5.2	4.6	6.0	5.0	6.8	5.3	7.2	5.5	7.3	5.7	8.4	5.9	9.2	6.1
	33	5.2	4.6	6.0	5.0	6.8	5.3	7.2	5.5	7.3	5.7	8.4	5.9	9.2	6.1
	35	5.2	4.6	6.0	5.0	6.8	5.3	7.2	5.5	7.1	5.7	8.4	5.9	9.2	6.1
	37	5.2	4.6	6.0	5.0	6.8	5.3	7.2	5.5	7.1	5.7	8.4	5.9	9.2	6.1
39	5.2	4.6	6.0	5.0	6.8	5.3	7.2	5.5	7.1	5.7	8.4	5.9	9.2	6.1	
8.0	10	5.8	5.4	6.8	5.8	7.8	6.0	8.4	6.2	9.0	6.4	10.0	6.6	11.0	6.8
	12	5.8	5.4	6.8	5.8	7.8	6.0	8.4	6.2	9.0	6.4	10.0	6.6	11.0	6.8
	14	5.8	5.4	6.8	5.8	7.8	6.0	8.4	6.2	9.0	6.4	10.0	6.6	11.0	6.8
	16	5.8	5.4	6.8	5.8	7.8	6.0	8.4	6.2	8.8	6.4	10.0	6.6	11.0	6.8
	18	5.8	5.4	6.8	5.8	7.8	6.0	8.4	6.2	8.8	6.4	10.0	6.6	11.0	6.8
	20	5.8	5.4	6.8	5.8	7.8	6.0	8.4	6.2	8.8	6.4	10.0	6.6	11.0	6.8
	21	5.8	5.4	6.8	5.8	7.8	6.0	8.4	6.2	8.6	6.4	10.0	6.6	11.0	6.8
	23	5.8	5.4	6.8	5.8	7.8	6.0	8.4	6.2	8.6	6.4	10.0	6.6	11.0	6.8
	25	5.8	5.4	6.8	5.8	7.8	6.0	8.4	6.2	8.4	6.4	10.0	6.6	11.0	6.8
	27	5.8	5.4	6.8	5.8	7.8	6.0	8.4	6.2	8.4	6.4	10.0	6.6	11.0	6.8
	29	5.8	5.4	6.8	5.8	7.8	6.0	8.4	6.2	8.4	6.4	10.0	6.6	11.0	6.8
	31	5.8	5.4	6.8	5.8	7.8	6.0	8.4	6.2	8.2	6.4	10.0	6.6	11.0	6.8
	33	5.7	5.3	6.7	5.7	7.7	5.9	8.2	6.0	8.2	6.2	9.8	6.4	10.8	6.6
	35	5.7	5.3	6.7	5.7	7.7	5.9	8.2	6.0	8.0	6.2	9.8	6.4	10.8	6.6
	37	5.7	5.3	6.7	5.7	7.7	5.9	8.2	6.0	8.0	6.2	9.8	6.4	10.8	6.6
39	5.7	5.3	6.7	5.7	7.7	5.9	8.2	6.0	8.0	6.2	9.8	6.4	10.8	6.6	

TC: total capacity SHC: sensible capacity

Indoor Unit size(kW)	Outdoor temperature (°c ,DB)	Indoor temperature (°c,WB)													
		14		16		18		19		20		22		24	
		TC	SHC	TC	SHC	TC	SHC	TC	SHC	TC	SHC	TC	SHC	TC	SHC
		kW	kW	kW	kW	kW	kW	kW	kW	kW	kW	kW	kW	kW	kW
9.0	10	6.2	5.8	7.4	6.4	8.6	6.8	9.2	7.1	9.8	7.3	11.0	7.4	12.0	7.5
	12	6.2	5.8	7.4	6.4	8.6	6.8	9.2	7.1	9.8	7.3	11.0	7.4	12.0	7.5
	14	6.2	5.8	7.4	6.4	8.6	6.8	9.2	7.1	9.8	7.3	11.0	7.4	12.0	7.5
	16	6.2	5.8	7.4	6.4	8.6	6.8	9.2	7.1	9.8	7.3	11.0	7.4	12.0	7.5
	18	6.2	5.8	7.4	6.4	8.6	6.8	9.2	7.1	9.6	7.3	11.0	7.4	12.0	7.5
	20	6.2	5.8	7.4	6.4	8.6	6.8	9.2	7.1	9.6	7.3	11.0	7.4	12.0	7.5
	21	6.2	5.8	7.4	6.4	8.6	6.8	9.2	7.1	9.4	7.3	11.0	7.4	12.0	7.5
	23	6.2	5.8	7.4	6.4	8.6	6.8	9.2	7.1	9.4	7.3	11.0	7.4	12.0	7.5
	25	6.2	5.8	7.4	6.4	8.6	6.8	9.2	7.1	9.4	7.3	11.0	7.4	12.0	7.5
	27	6.2	5.8	7.4	6.4	8.6	6.8	9.2	7.1	9.4	7.3	11.0	7.4	12.0	7.5
	29	6.2	5.8	7.4	6.4	8.6	6.8	9.2	7.1	9.2	7.3	11.0	7.4	12.0	7.5
	31	6.2	5.8	7.4	6.4	8.6	6.8	9.2	7.1	9.2	7.3	11.0	7.4	12.0	7.5
	33	6.0	5.6	7.2	6.2	8.4	6.6	9.0	6.9	9.2	7.1	10.8	7.2	11.8	7.3
	35	6.0	5.6	7.2	6.2	8.4	6.6	9.0	6.9	9.0	7.1	10.8	7.2	11.8	7.3
	37	6.0	5.6	7.2	6.2	8.4	6.6	9.0	6.9	9.0	7.1	10.8	7.2	11.8	7.3
39	6.0	5.6	7.2	6.2	8.4	6.6	9.0	6.9	9.0	7.1	10.8	7.2	11.8	7.3	
11.2	10	8.4	7.4	9.6	8.0	10.8	8.8	11.4	9.0	12.0	9.2	13.2	9.4	14.6	9.6
	12	8.4	7.4	9.6	8.0	10.8	8.8	11.4	9.0	12.0	9.2	13.2	9.4	14.6	9.6
	14	8.4	7.4	9.6	8.0	10.8	8.8	11.4	9.0	12.0	9.2	13.2	9.4	14.6	9.6
	16	8.4	7.4	9.6	8.0	10.8	8.8	11.4	9.0	12.0	9.2	13.2	9.4	14.6	9.6
	18	8.4	7.4	9.6	8.0	10.8	8.8	11.4	9.0	11.8	9.2	13.2	9.4	14.6	9.6
	20	8.4	7.4	9.6	8.0	10.8	8.8	11.4	9.0	11.8	9.2	13.2	9.4	14.6	9.6
	21	8.4	7.4	9.6	8.0	10.8	8.8	11.4	9.0	11.8	9.2	13.2	9.4	14.6	9.6
	23	8.4	7.4	9.6	8.0	10.8	8.8	11.4	9.0	11.6	9.2	13.2	9.4	14.6	9.6
	25	8.4	7.4	9.6	8.0	10.8	8.8	11.4	9.0	11.6	9.2	13.2	9.4	14.6	9.6
	27	8.4	7.4	9.6	8.0	10.8	8.8	11.4	9.0	11.6	9.2	13.2	9.4	14.6	9.6
	29	8.4	7.4	9.6	8.0	10.8	8.8	11.4	9.0	11.4	9.2	13.2	9.4	14.6	9.6
	31	8.3	7.3	9.5	7.9	10.7	8.7	11.3	8.9	11.4	9.1	13.1	9.3	14.5	9.5
	33	8.3	7.3	9.5	7.9	10.7	8.7	11.3	8.9	11.4	9.1	13.1	9.3	14.5	9.5
	35	8.3	7.3	9.5	7.9	10.7	8.7	11.3	8.9	11.2	9.1	13.1	9.3	14.5	9.5
	37	8.2	7.2	9.4	7.8	10.6	8.6	11.2	8.8	11.2	9.0	13.0	9.2	14.4	9.4
39	8.2	7.2	9.4	7.8	10.6	8.6	11.2	8.8	11.2	9.0	13.0	9.2	14.4	9.4	

2.6.2 Heating

TC: total capacity

Indoor Unit size(kW)	Outdoor temperature		Indoor temperature (°c,DB)					
			14	16	18	20	22	24
	DB	WB	TC	TC	TC	TC	TC	TC
kW			kW	kW	kW	KW	Kw	
2.8	-15.0	-15.8	2.0	2.0	1.9	1.9	1.8	1.8
	-14.0	-14.8	2.0	2.0	2.0	2.0	2.0	2.0
	-12.0	-12.8	2.2	2.2	2.2	2.1	2.1	2.1
	-10.0	-10.8	2.4	2.4	2.4	2.2	2.2	2.2
	-8.0	-8.8	2.6	2.6	2.6	2.3	2.3	2.3
	-6.0	-7.0	2.8	2.8	2.8	2.4	2.4	2.4
	-4.0	-5.0	3.0	3.0	3.0	2.6	2.6	2.6
	-2.0	-3.0	3.2	3.2	3.2	2.8	2.8	2.8
	0.0	-1.0	3.5	3.5	3.4	3.0	3.0	3.0
	3.0	2.0	3.6	3.5	3.4	3.2	3.0	2.8
	5.0	4.0	3.6	3.5	3.4	3.2	3.0	2.8
	7.0	6.0	3.6	3.5	3.4	3.2	3.0	2.8
	9.0	8.0	3.6	3.5	3.4	3.2	3.0	2.8
	11	10.0	3.6	3.5	3.4	3.2	3.0	2.8
	13	12.0	3.6	3.5	3.4	3.2	3.0	2.8
15	14.0	3.6	3.5	3.4	3.2	3.0	2.8	
3.6	-15.0	-15.8	2.6	2.6	2.6	2.6	2.5	2.4
	-14.0	-14.8	2.6	2.6	2.6	2.6	2.6	2.6
	-12.0	-12.8	2.8	2.8	2.8	2.7	2.7	2.7
	-10.0	-10.8	3.0	3.0	3.0	2.7	2.7	2.7
	-8.0	-8.8	3.2	3.2	3.2	2.8	2.8	2.8
	-6.0	-7.0	3.4	3.4	3.4	3.0	3.0	3.0
	-4.0	-5.0	3.6	3.6	3.6	3.2	3.2	3.2
	-2.0	-3.0	4.0	4.0	3.7	3.4	3.4	3.4
	0.0	-1.0	4.2	4.2	3.9	3.6	3.6	3.6
	3.0	2.0	4.4	4.4	4.1	3.8	3.8	3.8
	5.0	4.0	4.6	4.6	4.3	4.0	3.7	3.4
	7.0	6.0	4.6	4.6	4.3	4.0	3.7	3.4
	9.0	8.0	4.6	4.6	4.3	4.0	3.7	3.4
	11	10.0	4.6	4.6	4.3	4.0	3.7	3.4
	13	12.0	4.6	4.6	4.3	4.0	3.7	3.4
15	14.0	4.6	4.6	4.3	4.0	3.7	3.4	

TC: total capacity

Indoor Unit size(kW)	Outdoor temperature		Indoor temperature (°c,)DB					
			14	16	18	20	22	24
	DB	WB	TC	TC	TC	TC	TC	TC
kW			kW	kW	kW	KW	Kw	
4.5	-15.0	-15.8	3.2	3.2	3.1	3.1	3.0	3.0
	-14.0	-14.8	3.5	3.5	3.5	3.2	3.2	3.2
	-12.0	-12.8	3.7	3.7	3.7	3.4	3.4	3.4
	-10.0	-10.8	4.0	4.0	4.0	3.6	3.6	3.6
	-8.0	-8.8	4.3	4.3	4.3	3.8	3.8	3.8
	-6.0	-7.0	4.6	4.6	4.6	4.0	4.0	4.0
	-4.0	-5.0	5.0	5.0	5.0	4.2	4.2	4.0
	-2.0	-3.0	5.3	5.3	5.3	4.4	4.4	4.0
	0.0	-1.0	5.5	5.5	5.3	4.6	4.4	4.2
	3.0	2.0	5.8	5.8	5.4	4.8	4.6	4.2
	5.0	4.0	5.8	5.8	5.4	5.0	4.6	4.2
	7.0	6.0	5.8	5.8	5.4	5.0	4.6	4.2
	9.0	8.0	5.8	5.8	5.4	5.0	4.6	4.2
	11	10.0	5.8	5.8	5.4	5.0	4.6	4.2
	13	12.0	5.8	5.8	5.4	5.0	4.6	4.2
15	14.0	5.8	5.8	5.4	5.0	4.6	4.2	
5.6	-15.0	-15.8	4.0	4.0	4.0	4.0	3.8	3.8
	-14.0	-14.8	4.2	4.2	4.2	4.2	4.2	4.2
	-12.0	-12.8	4.4	4.4	4.4	4.4	4.4	4.4
	-10.0	-10.8	4.6	4.6	4.6	4.6	4.6	4.6
	-8.0	-8.8	4.8	4.8	4.8	4.8	4.8	4.8
	-6.0	-7.0	5.2	5.2	5.2	5.1	4.8	4.8
	-4.0	-5.0	5.6	5.6	5.6	5.4	5.1	5.1
	-2.0	-3.0	6.0	6.0	6.0	5.7	5.3	5.1
	0.0	-1.0	6.4	6.4	6.4	6.0	5.5	5.1
	3.0	2.0	6.8	6.8	6.8	6.3	5.8	5.3
	5.0	4.0	6.8	6.8	6.8	6.3	5.8	5.3
	7.0	6.0	6.8	6.8	6.8	6.3	5.8	5.3
	9.0	8.0	6.8	6.8	6.8	6.3	5.8	5.3
	11	10.0	6.8	6.8	6.8	6.3	5.8	5.3
	13	12.0	6.8	6.8	6.8	6.3	5.8	5.3
15	14.0	6.8	6.8	6.8	6.3	5.8	5.3	

TC: total capacity

Indoor Unit size(kW)	Outdoor temperature		Indoor temperature (°c,)DB					
	DB	WB	14	16	18	19	20	22
			TC kW	TC kW	TC kW	TC kW	TC KW	TC Kw
7.1	-15.0	-15.8	5.2	5.2	5.0	5.0	4.8	4.8
	-14.0	-14.8	5.3	5.3	5.4	5.3	5.0	4.8
	-12.0	-12.8	5.5	5.5	5.5	5.5	5.3	5.0
	-10.0	-10.8	5.7	5.7	5.7	5.7	5.6	5.0
	-8.0	-8.8	5.9	5.9	5.9	5.9	5.9	5.3
	-6.0	-7.0	6.2	6.2	6.2	6.2	6.2	5.6
	-4.0	-5.0	6.5	6.5	6.5	6.5	6.5	5.9
	-2.0	-3.0	6.8	6.8	6.8	6.8	6.8	6.2
	0.0	-1.0	7.1	7.1	7.1	7.0	7.0	6.5
	3.0	2.0	7.4	7.4	7.4	7.4	7.1	6.8
	5.0	4.0	7.7	7.7	7.7	7.7	7.4	6.8
	7.0	6.0	8.0	8.0	8.0	8.0	7.4	6.8
	9.0	8.0	8.3	8.3	8.3	8.0	7.4	6.8
	11	10.0	8.6	8.6	8.6	8.0	7.4	6.8
	13	12.0	8.6	8.6	8.6	8.0	7.4	6.8
15	14.0	8.6	8.6	8.6	8.0	7.4	6.8	
8.0	-15.0	-15.8	6.3	6.3	6.2	6.2	6.1	6.0
	-14.0	-14.8	6.4	6.4	6.3	6.3	6.3	6.3
	-12.0	-12.8	6.6	6.6	6.5	6.5	6.5	6.5
	-10.0	-10.8	6.8	6.8	6.7	6.7	6.7	6.7
	-8.0	-8.8	7.0	7.0	6.9	6.9	6.9	6.9
	-6.0	-7.0	7.2	7.2	7.1	7.1	7.1	7.1
	-4.0	-5.0	7.5	7.5	7.4	7.4	7.4	7.4
	-2.0	-3.0	7.8	7.8	7.7	7.7	7.7	7.7
	0.0	-1.0	8.1	8.1	7.8	7.8	7.8	7.8
	3.0	2.0	8.4	8.4	7.9	7.9	7.9	7.8
	5.0	4.0	8.7	8.7	8.1	8.1	8.1	7.8
	7.0	6.0	9.0	9.0	8.4	8.4	8.4	7.8
	9.0	8.0	9.3	9.3	8.7	8.7	8.4	7.8
	11	10.0	9.6	9.6	9.0	9.0	8.4	7.8
	13	12.0	9.9	9.9	9.3	9.0	8.4	7.8
15	14.0	10.2	10.2	9.6	9.0	8.4	7.8	

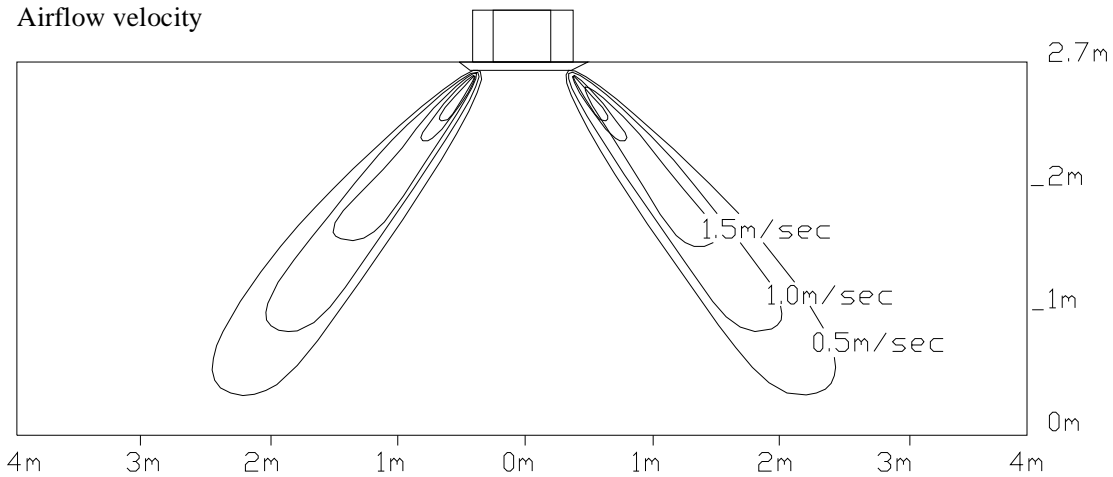
TC: total capacity

Indoor Unit size(kW)	Outdoor temperature		Indoor temperature (°c,)DB					
			14	16	18	19	20	22
	DB	WB	TC	TC	TC	TC	TC	TC
			kW	kW	kW	kW	KW	Kw
9.0	-15.0	-15.8	6.4	6.4	6.3	6.3	6.2	6.1
	-14.0	-14.8	6.8	6.8	6.7	6.7	6.7	6.6
	-12.0	-12.8	7.2	7.2	7.1	7.1	7.1	7.0
	-10.0	-10.8	7.6	7.6	7.6	7.6	7.6	7.5
	-8.0	-8.8	8.0	8.0	8.0	8.0	8.0	7.9
	-6.0	-7.0	8.4	8.4	8.4	8.4	8.4	8.2
	-4.0	-5.0	8.7	8.7	8.7	8.7	8.7	8.4
	-2.0	-3.0	9.0	9.0	9.0	9.0	9.0	8.4
	0.0	-1.0	9.3	9.3	9.3	9.3	9.2	8.4
	3.0	2.0	9.7	9.7	9.7	9.7	9.2	8.4
	5.0	4.0	10.0	10.0	10.0	10.0	9.2	8.4
	7.0	6.0	10.4	10.4	10.4	10.0	9.2	8.4
	9.0	8.0	10.7	10.7	10.7	10.0	9.2	8.4
	11	10.0	11.0	11.0	10.8	10.0	9.2	8.4
	13	12.0	11.3	11.3	10.8	10.0	9.2	8.4
15	14.0	11.6	11.6	10.8	10.0	9.2	8.4	
11.2	-15.0	-15.8	8.2	8.2	8.0	8.0	7.9	7.8
	-14.0	-14.8	8.5	8.5	8.5	8.5	8.4	8.3
	-12.0	-12.8	8.8	8.8	8.8	8.8	8.8	8.8
	-10.0	-10.8	9.2	9.2	9.2	9.2	9.2	9.2
	-8.0	-8.8	9.6	9.6	9.6	9.6	9.6	9.6
	-6.0	-7.0	10.0	10.0	10.0	10.0	10.0	9.9
	-4.0	-5.0	10.5	10.5	10.5	10.5	10.5	10.5
	-2.0	-3.0	11.0	11.0	11.0	11.0	11.0	11.0
	0.0	-1.0	11.5	11.5	11.5	11.5	11.4	11.0
	3.0	2.0	12.0	12.0	12.0	12.0	12.0	11.0
	5.0	4.0	12.5	12.5	12.5	12.5	12.0	11.0
	7.0	6.0	13.0	13.0	13.0	13.0	12.0	11.0
	9.0	8.0	13.5	13.5	13.5	13.0	12.0	11.0
	11	10.0	14.0	14.0	14.0	13.0	12.0	11.0
	13	12.0	14.5	14.5	14.0	13.0	12.0	11.0
15	14.0	15.0	15.0	14.0	13.0	12.0	11.0	

2.7 Velocity distribution

Discharge angle 60°

Airflow velocity



2.8 Functional parts & safety device

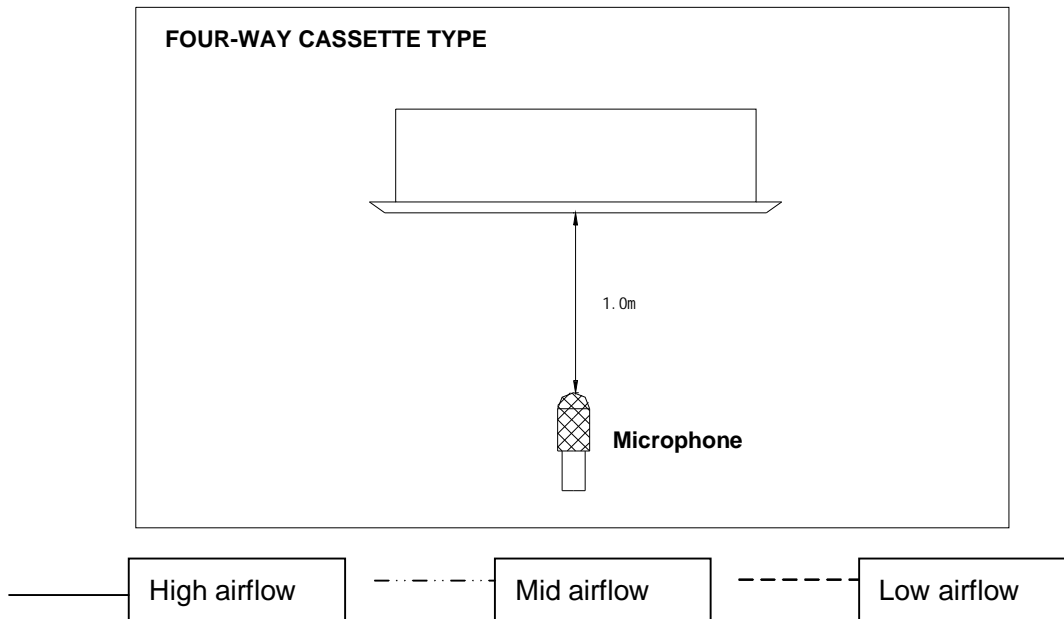
Model MDV-D		56Q4/ N1	71Q4/ N1	80Q4/ N1	90Q4/ N1	112Q4/ N1
Safety Device	PC board fuse	5A	5A	5A	5A	5A
	Fan motor thermal protector	BW130°C	BW130°C	BW130°C	BW130°C	BW130°C
Functional Device	Electronic throttle kit	CE-DZJLBJ07	CE-DZJLBJ07	CE-DZJLBJ07	CE-DZJLBJ07	CE-DZJLBJ07

Model MDV-D		28Q4/BN1	36Q4/BN1	45Q4/BN1
Safety Device	PC board fuse	5A	5A	5A
	Fan motor thermal protector	BW130°C	BW130°C	BW130°C
Functional Device	Electronic throttle kit	CE-DZJLBJ06	CE-DZJLBJ06	CE-DZJLBJ06

Remark: BW130°C - cut off at 130°C±15°C and recover at 85°C±15°C

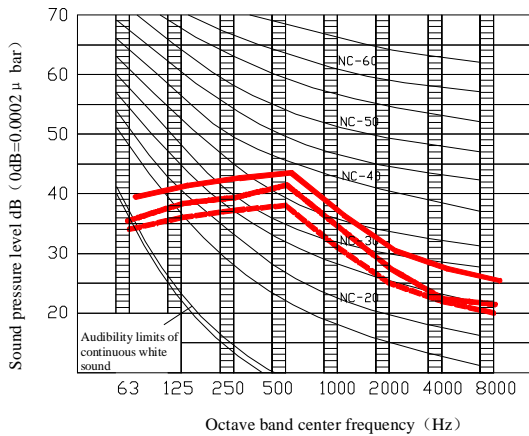
2.9 Sound level

2.9.1 Test condition

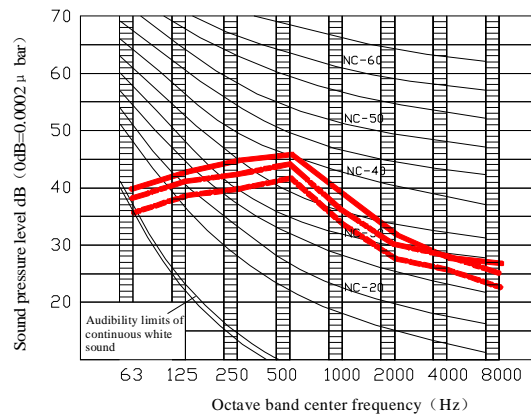


2.9.2 Noise spectrums

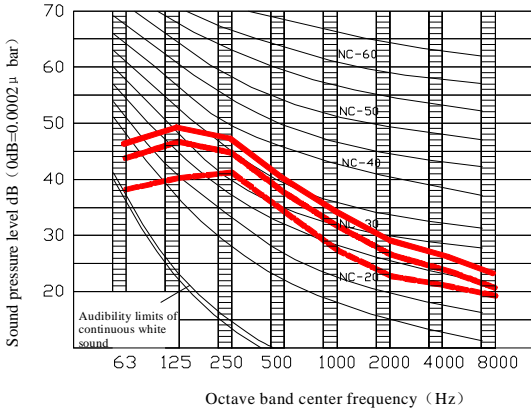
MDV-D56Q4/ N1



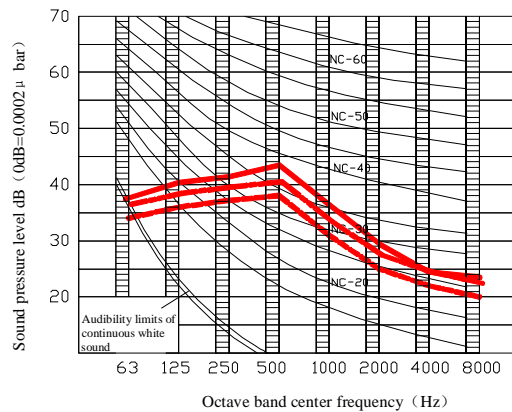
MDV-D71、80Q4/N1



MDV-D90、112Q4/N1

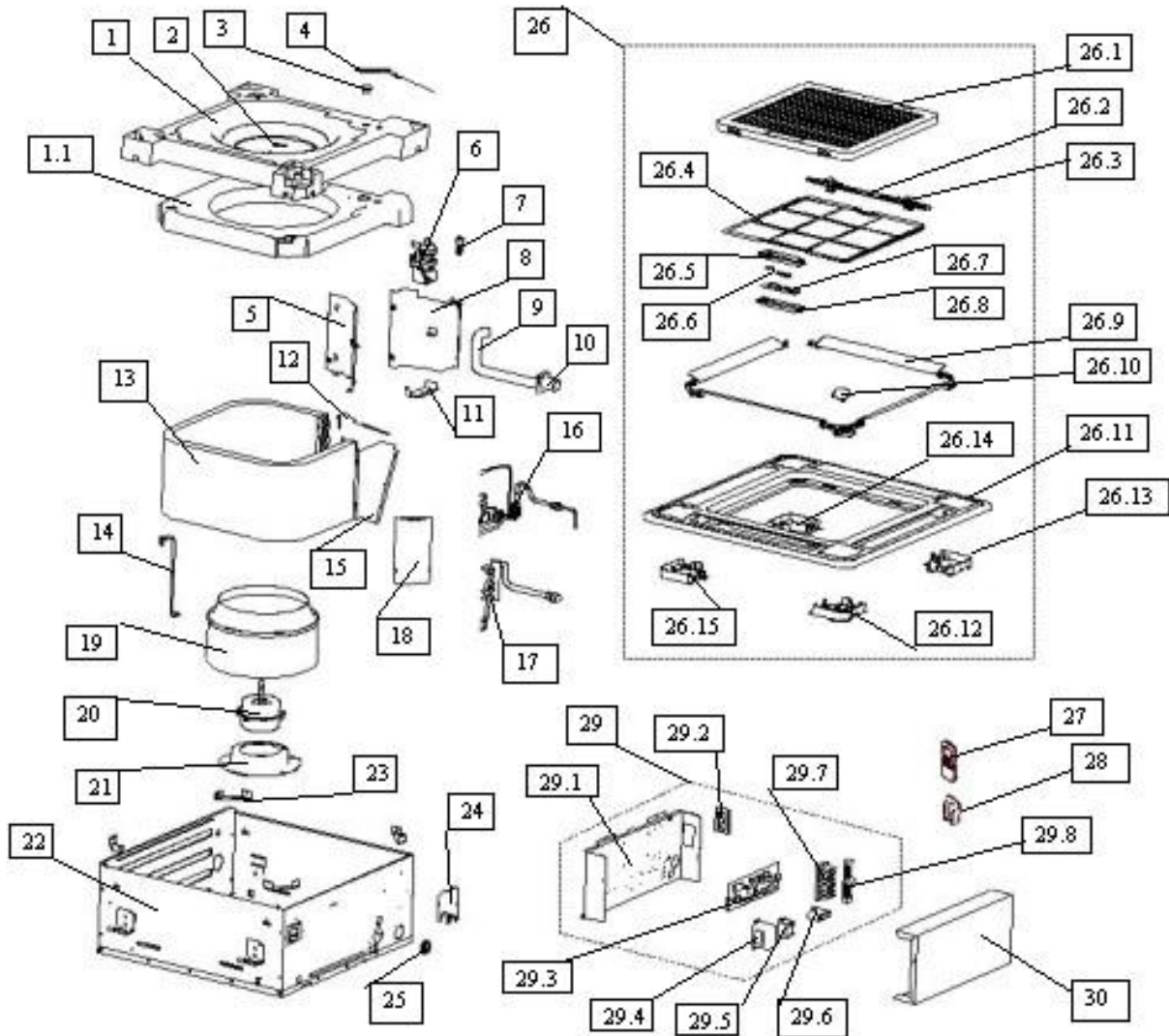


MDV-D28、36、45Q4/BN1



2.10 Exploded view parts

2.10.1 MDVD28Q4/BN1 MDV-D36Q4/BN1 MDV-D45Q4/BN1

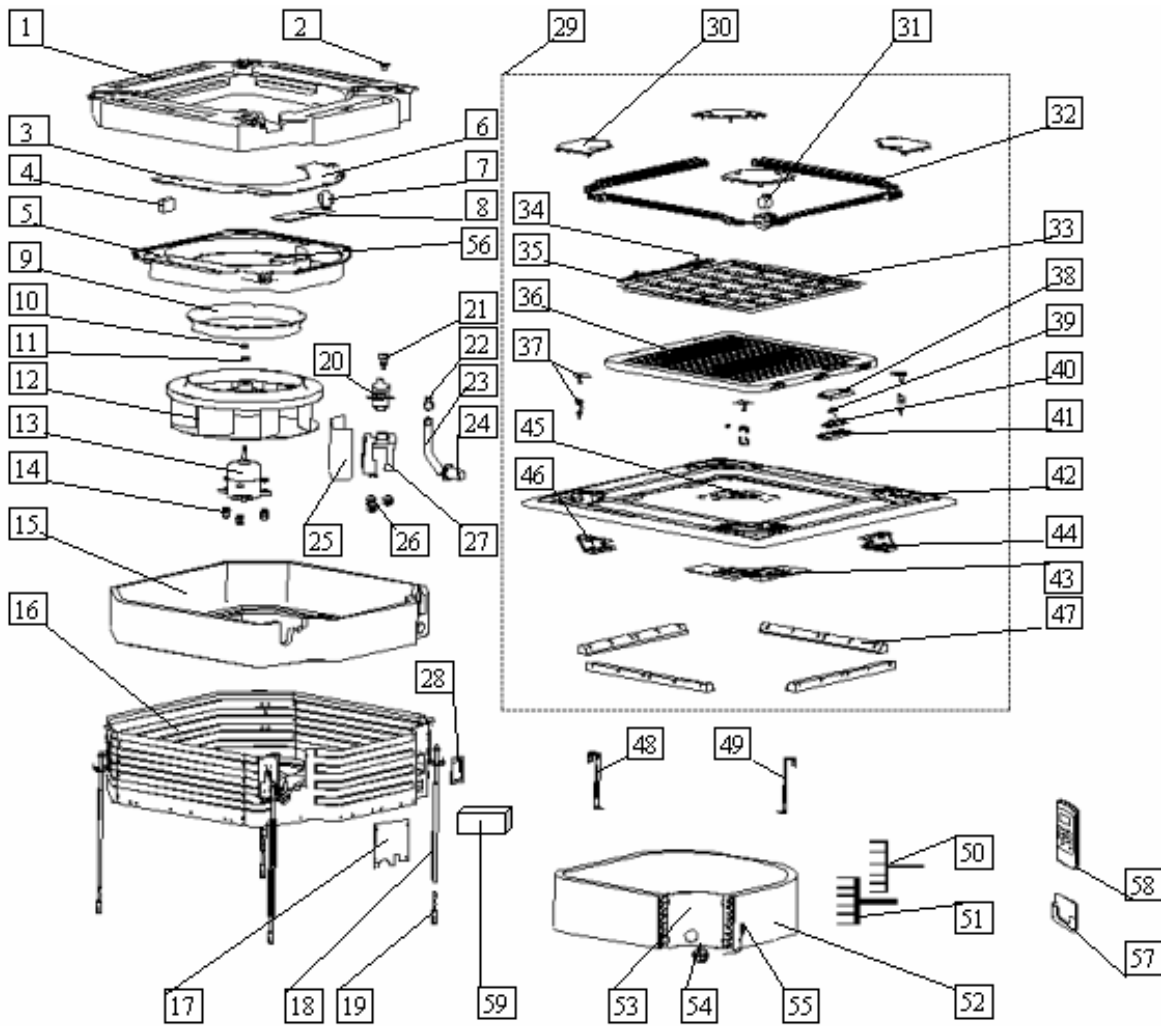


No.	Part Name	Quantity
1	Collect Water Pan , Ass'y	1
1.1	Foam, Collect Water Pan	1
2	Wired fixing board	1
3	Stopper, Water Drain	1
4	Room Temperature Sensor Ass'y	1
5	Evaporator Fixture Board Ass'y	1
6	Drain Pump	1
7	Liquid Position Sensor Ass'y	1
8	Deseparating board, right	1
9	Drain pipe	1

No.	Part Name	Quantity
26.1	Air inlet grille	1
26.2	Switch cover, air inlet grille	1
26.3	Switch, air inlet grille	2
26.4	Filter	1
26.5	Control box	1
26.6	LED holder	1
26.7	Control board	1
26.8	Cover, control box	1
26.9	Fan guide	4
26.10	Swing motor	1

10	Extend water pipe	1	26.11	Panel	1
11	Drain Pump Holder	1	26.12	Install cover, swing motor	1
12	Pipe Temperature Sensor Ass'y	1	26.13	Install cover I	1
13	Evaporator Ass'y	1	26.14	Install cover II	1
14	Fixing clamp, evaporator	1	26.15	Install cover I	1
15	Deseparating board, left	1	27	Remoter	1
16	Inlet pipe, eva	1	28	Holder, Remote Controller	1
17	Outlet pipe, eva	1	29	E-control Ass'y	1
18	Wired crossing board	1	29.1	Control Box	1
19	Fan	1	29.2	Rubber, wired crossing	1
20	Fan Motor	1	29.3	PCB Ass'y	1
21	Fan Motor Underlay	1	29.4	Transformer	1
22	Base Pan Ass'y	1	29.5	Relay	1
23	Fixing board, water pan	4	29.6	Capacitor	1
24	Sealing board, pipe out	1	29.7	Base, wired fixing	1
25	Rubber, wired crossing	2	29.8	Cover, wired fixing	1
26	Panel Ass'y	1	30	Control Box Cover	1
			31	Electronic Throttle Part	1

2.10.2 MDV-D56Q4/N1 MDV-D71Q4/N1 MDV-D80Q4/N1 MDV-D90Q4/N 1
MDV-D112Q4/N1



No.	Part Name	Quantity	No.	Part Name	Quantity
1	Water receiver, Ass'y	1	30	Cover, installing	4
2	Stopper, water drain	1	31	Swing motor	1
3	E-Parts box cover1	1	32	Fan guide	4
4	Capacity	1	33	Filter	1
5	E-Parts Box Ass'y	1	34	Switch, air inlet grille	2
6	E-Parts Box Cover2	1	35	Switch cover, air inlet grille	1
7	Transformer	1	36	Air inlet grille	1
8	PCB Ass'y	1	37	Hanger for panel, assmy	4
9	Wind inlet guide	1	38	Control box	1
10	Nut	1	39	LED holder	1

11	Clamp, fan	1	40	Control board	1
12	Fan Ass'y	1	41	Cover, control box	1
13	Fan Motor	1	42	Panel	1
14	Gasket, motor	3	43	Back board, Air out 1	1
15	Evaporator Base Ass'y	1	44	Back board, Air out 2	1
16	Base Pan Ass'y	1	45	Back board, Air out 3	1
	Wired clamp board	1	46	Back board, Air out 4	1
17	Sealing board, pipe out	1	47	Foam, air out 1	4
18	Install hanger	4		Foam, air out 2	4
19	Expandable hanger	4	48	Fixing hanger, Evaporator	1
20	Drain Pump Ass'y	1	49	Fixing hanger, Evaporator	1
21	Water switch	1	50	Eva in pipe, assmy	1
22	Clamp, water pipe	1	51	Eva out pipe, assmy	1
23	Water pipe	1	52	Evaporator Ass'y	1
24	Extend water pipe	1	53	Fixing board, Evaporator	1
25	Separate board, pump	1	54	Rubber, wired crossing	1
26	Rubber washer, pump	3	55	Pipe Temperature Sensor Ass'y	1
27	Holder, pump	1	56	Room Temperature Sensor Ass'y	1
28	Water trying board	1	57	Holder for remote controller	1
29	Panel Ass'y	1	58	Remoter	1
			59	Electronic Throttle Part	1

2.11 Optional accessories

Number	Item
1	Wired controller
2	Central controller
3	Network controller

Duct type

3.1 Features.....	42
3.2 Specification.....	44
3.3. Dimensions.....	46
3.4. Piping Diagrams.....	47
3.5. Wiring Diagrams.....	48
3.6. Capacity Tables.....	50
3.7. Static pressure curve.....	53
3.8. Functional parts & safety device.....	63
3.9. Sound Levels.....	64
3.10. Explored View.....	64
3.11. Accessories.....	66

3.1 Features

3.1.1 Normal body

3.1.1.1 Economic and convenient installation

- Several diffusers branch off from an indoor unit, adjusting the room temperature, which makes many rooms to be air-conditioned with only one indoor unit.
- All Models feature thin design making them applicable to ceiling pocket that tends to be shallow



3.1.1.2 A wild variety of optional accessories

- Including front clapboard, panel, canvas air passage, filter, etc.



Canvas air passage



Clapboard



Panel

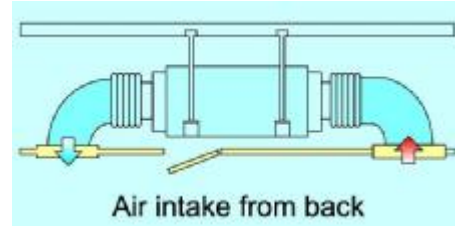
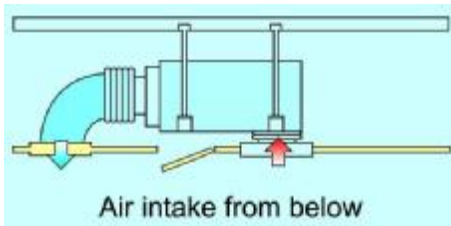
3.1.1.3 A long-life and high-efficiency filter



Filter

3.1.1.4 Way of air intake and inserting air filter

---Air intake can be positioned either at the back or below the unit. Similarly, the air filter also can be inserted either from the back or from the bottom of the unit.

**3.1.2 All-plastic body**

3.1.2.1 Low operation noise

3.1.2.2 Compact Structure and light weight

3.1.2.3 Adopt Cross Fan

3.1.2.4 Adopt 4-bend Evaporator with High Efficient



Capacity Range: 2.2 、 2.8、 3.6Kw

3.2 Specifications

Model		MDV-D22T2/N1-A3	MDV-D28T2/N1-A3	MDV-D36T2/N1-A3	MDV-D45T2/CN1	MDV-D56T2/CN1	
Power Supply		Ph-V-Hz	220-240V~,1Ph, 50Hz				
Nominal Capacity							
Cooling	Capacity	Btu/h	7000	9000	12000	16000	18000
	Input	W	50	50	50	150	150
Heating	Capacity	Btu/h	8000	10000	13500	18000	20000
	Input	W	50	50	50	150	150
Electric Parameter							
Max. input consumption		W	60	60	60	200	200
Running current		A	0.2	0.2	0.2	0.5	0.5
Starting current		A	3.1	3.1	3.1	3.9	3.9
Indoor Motor							
Model			RPS20D			YSK55-4D	YSK55-4D
Type			Cross fan			Centrifugal fan	
Brand			Welling				
Input		W	42	45	45	110	110
Capacitor		uF	1.0uF/450V	1.0uF/450V	1.0uF/450V	3uF/450V	3uF/450V
Speed(hi/mi/lo)		r/min	940/840/760			900/800/690	
Indoor noise level(HI/MID/LOW)		dB(A)	38/36/34			45/41/38	
Indoor external static pressure		Pa	10			40	
Indoor Coil							
a.Number of rows			2	2	2	3	3
b.Tube pitch(a)x row pitch(b)		mm	21X13.37	21X13.37	21X13.37	25.4X22	25.4X22
c.Fin spacing		mm	1.8	1.6	1.6	1.7	1.7
d.Fin type			Hydrophilic Aluminium				
e.Tube outside dia.and type		mm	Φ7 Innergroove Tube			Φ9.53 Innergroove Tube	
f.Coil length x height x width		mm	700X350X26	700X350X26		800x254x44	
g.Number of circuits			4	4	4	3	3
Indoor air flow (Hi/Lo)		m ³ /h	580/490/420			1160/1100/950	
Technical Specification							
Indoor unit	Dimension (W*H*D)	mm	955×210×385			1000×298×800	
	Packing (W*H*D)	mm	1114X277 X469			1205X370 X940	
	Net/Gross weight	Kg	15/19	15/19	15/19	37.2/43.3	
Application area		m ²	11-22	14-28	18-36	22-45	28-56
Piping size	Liquid/ Gas side	mm(inch)	Φ6.35(1/4)/ φ12.7(1/2')			φ9.53(3/8)/ φ16(3/4')	
Qty per 20'/40'/40'HQ		Pieces	214/437/480			60/140/164	

Model			MDV-D71T2/CN1	MDV-D80T2/CN1	MDV-D90T2/CN1	MDV-D112T2/CN1	MDV-D140T2/CN1
Power Supply		Ph-V-Hz	220-240V~,1Ph 50Hz				
Nominal Capacity							
Cooling	Capacity	Btu/h	24000	28000	30000	40000	48000
	Input	W	160	160	220	220	220
Heating	Capacity	Btu/h	27000	31000	33000	44000	52000
	Input	W	160	160	220	220	220
Electric Parameter							
Max. input consumption		W	335	335	379	379	379
Running current		A	0.72	0.72	0.98	0.98	0.98
Starting current		A	9.5	9.5	11	11	11
Indoor Motor							
Model			YSK74-4C		YSK59-4A		
Type			Centrifugal fan				
Brand			Welling				
Input		W	150	150	215	215	215
Capacitor		uF	2.5uF/450V	2.5uF/450V	2.5uF/450V	2.5uF/450V	4uF/450V
Speed(hi/mi/lo)		r/min	1100/1020/900		1120/1020/930		
Indoor noise level(HI/MID/LOW)		dB(A)	49/45/42		49/47/44		
Indoor external static pressure		Pa	40		70		
Indoor Coil							
a.Number of rows			3	3	2	3	3
b.Tube pitch(a)x row pitch(b)		mm	25.4X22	25.4X22	25.4X22	25.4X22	25.4X22
c.Fin spacing		mm	1.7	1.7	1.7	1.7	1.7
d.Fin type (code)			Hydrophilic aluminum				
e.Tube outside dia.and type		mm	Φ9.53 inner groove tube				
f.Coil length x height x width		mm	800x254x66		1150x254x44	1150x254x44	1150x254x66
g.Number of circuits			3	3	4	4	4
Indoor air flow (Hi/Lo)		m ³ /h	1460/1360/1150		2400/2100/1900		
Technical Specification							
Indoor unit	Dimension (W*H*D)	mm	1000×298×800		1350×298×800		
	Packing (W*H*D)	mm	1205×370×940		1555×370 X940		
	Net/Gross weight	Kg	37.2/43.3		51.4/58.3		
Application area		m ²	35-71	40-80	45-90	56-112	70-140
Piping size	Liquid/ Gas side	mm(inch)	φ9.53(3/8')/ φ16(5/8')				
Qty per 20'/40'/40'HQ		Pieces	60/140/164		48/100/112		

Notes: 1. Nominal cooling capacity are based on the following conditions:

indoor temperature : 27°CDB,19°CWB,outdoor temperature, 35°CDB,24°CWB,equivalent ref.Piping: 8m(horizontal)

2. Nominal heating capacity are based on the following conditions:

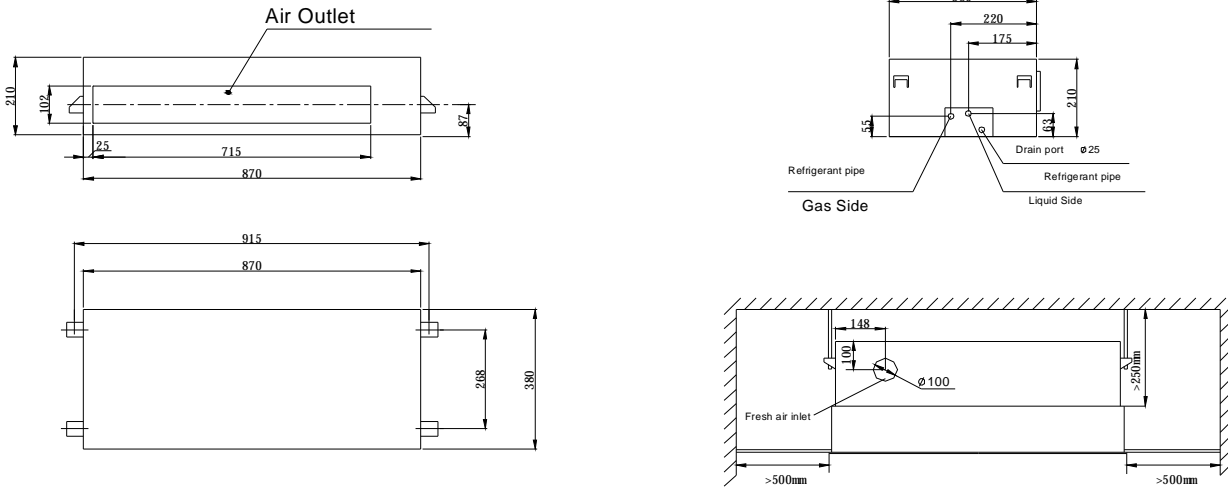
indoor temperature: 20°CDB,outdoor temperature: 7°CDB,6°CWB,equivalent ref.Piping: 8m(horizontal)

3. Capacities are net, not including a deduction for cooling (an addition for heating) for indoor fan motor heat

3.3 Dimensions

3.3.1 MDV-D22T2/N1-A3 MDV-D28T2/N1-A3 MDV-D36T2/N1-A3

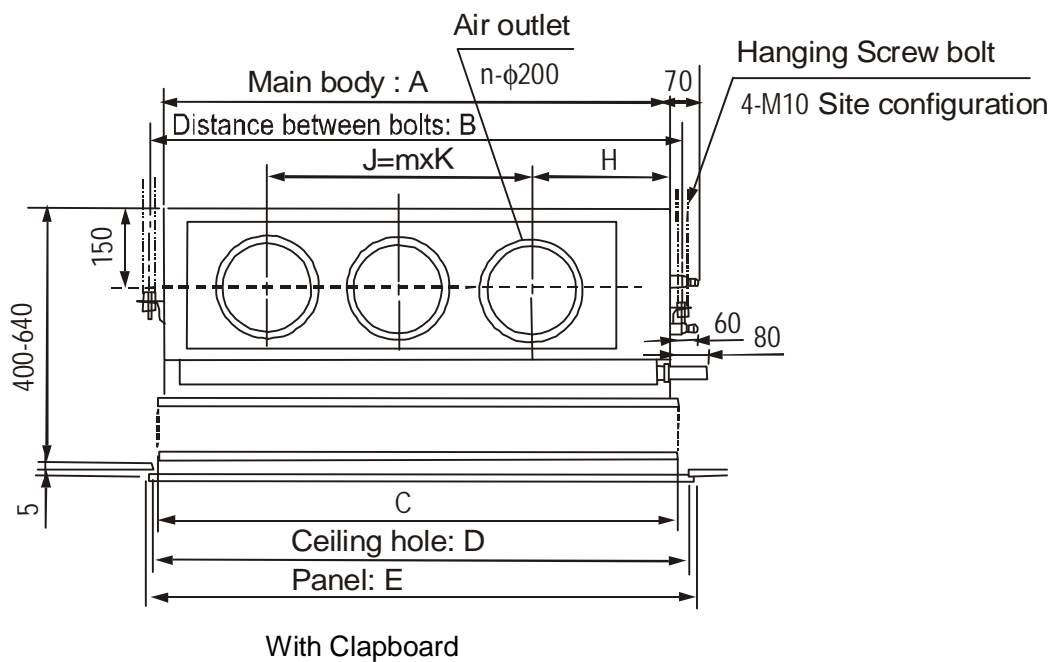
(unit: mm)

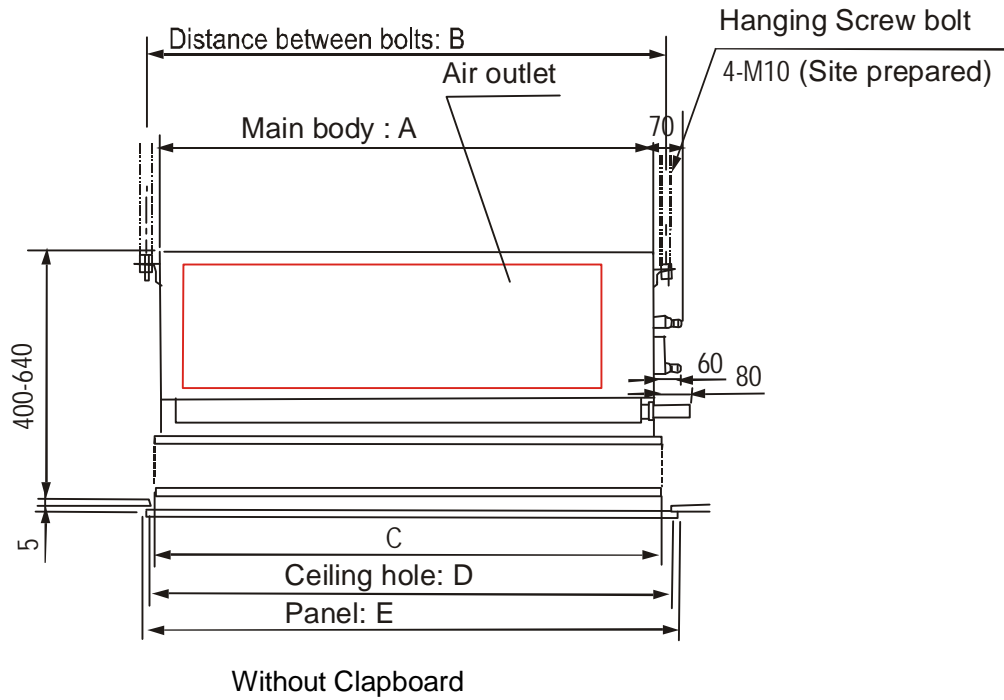


Name	Unit	Diameter
Drain hole	mm	25
Liquid side	mm	6.35
Gas side	mm	12.7

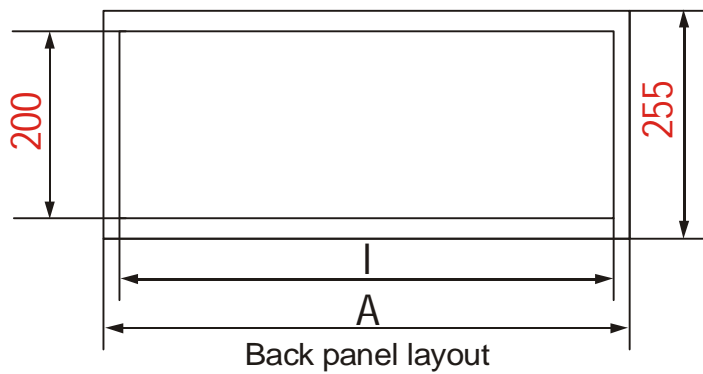
**3.3.2 MDV-D45T2/CN1 MDV-D56T2/CN1 MDV-D71T2/CN1 MDV-D80T2/CN1
MDV-D90T2/CN1 MDV-D112T2/CN1 MDV-D140T2/CN1**

(unit: mm)



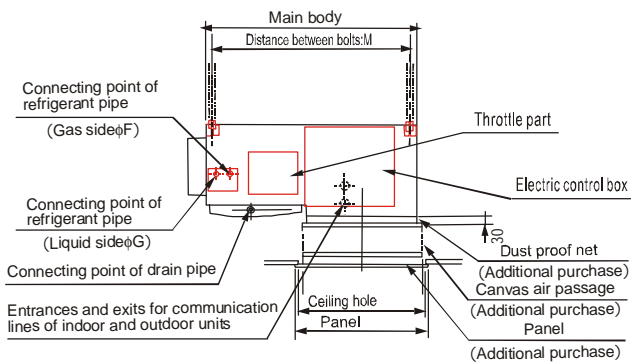


When using a back-air installation, please refer to the following:

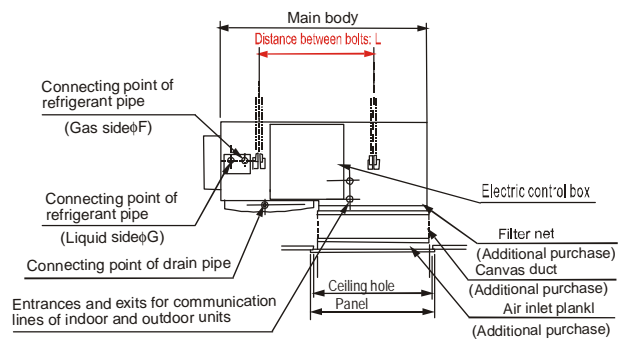


Install the main body:

1) Below air inlet:

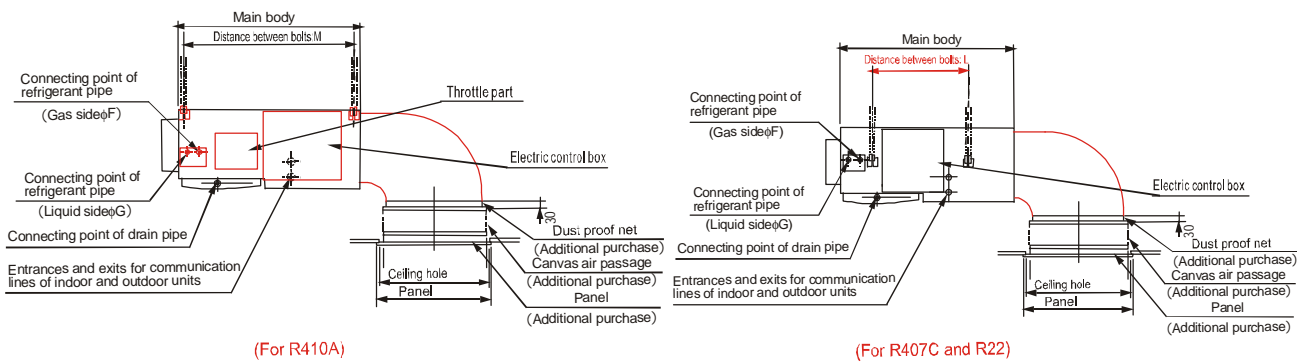


(For R410A)



(For R407C and R22)

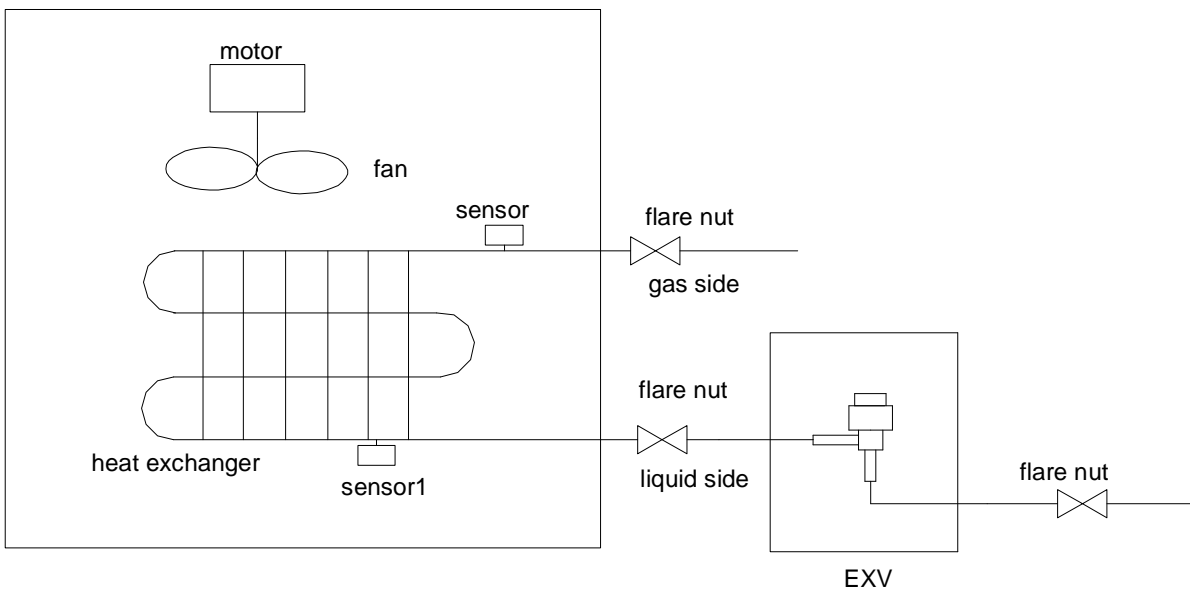
2) Back air inlet



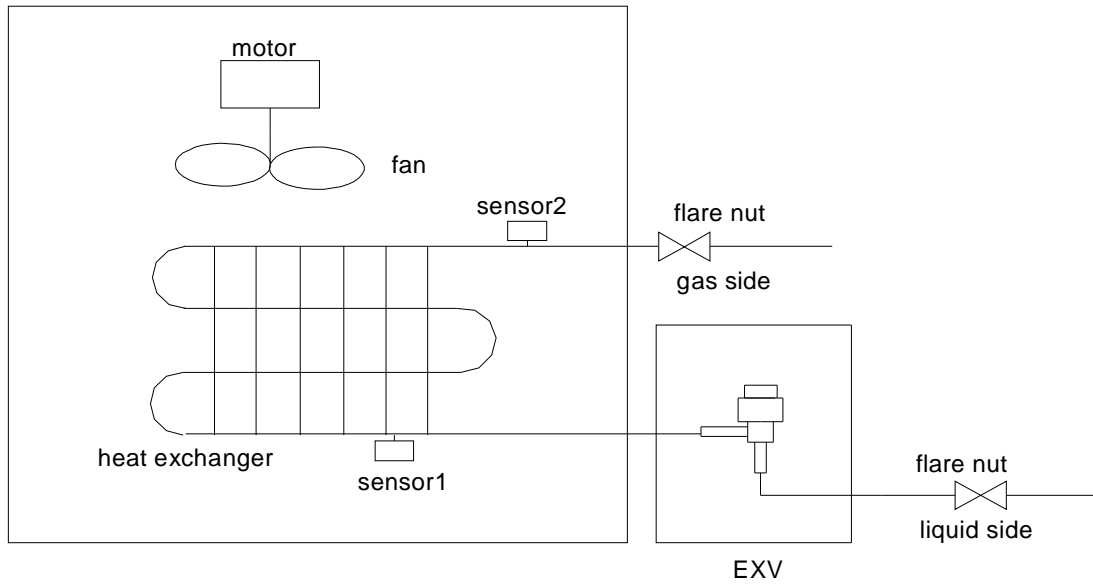
Capacity (Btu/h)	A	B	C	D	E	F	G	H	I	J	K	L	M	m	n	Refrigerant
45~80	1000	1052	1112	1085	1470	19	9.53	252	968	580	290	/	721	2	3	R410a
90~140	1350	1400	1380	1400	1430	19	9.53	252	1318	930	310	/	721	3	4	R410a

3.4 Piping diagrams

3.4.1 MDV-D22T2/N1-A3 MDV-D28T2/N1-A3 MDV-D36T2/N1-A3

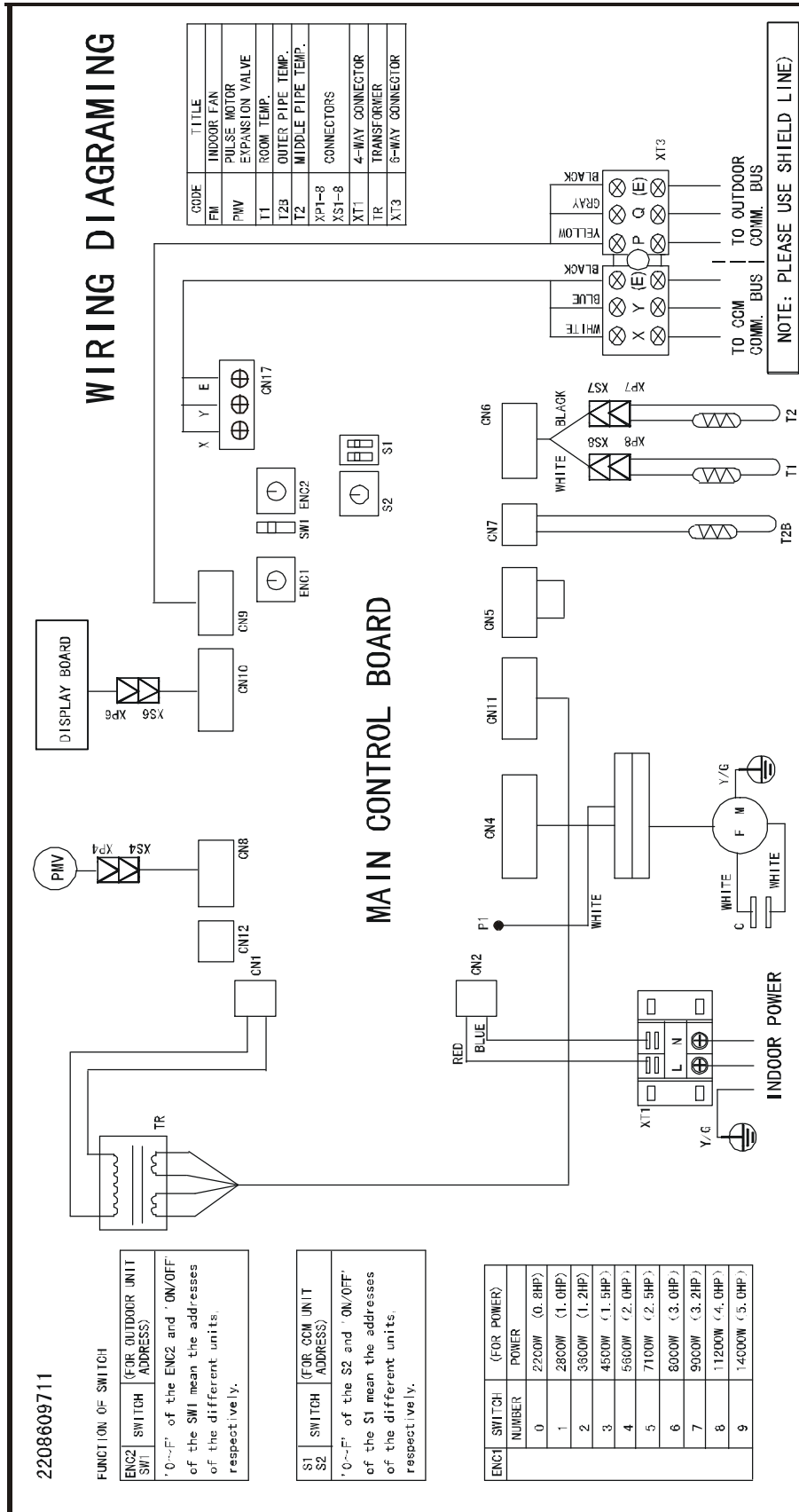


3.4.2 MDV-D45T2/CN1 MDV-D56T2/CN1 MDV-D71T2/CN1 MDV-D80T2/CN1
MDV-D90T2/CN1 MDV-D112T2/CN1 MDV-D140T2/CN1

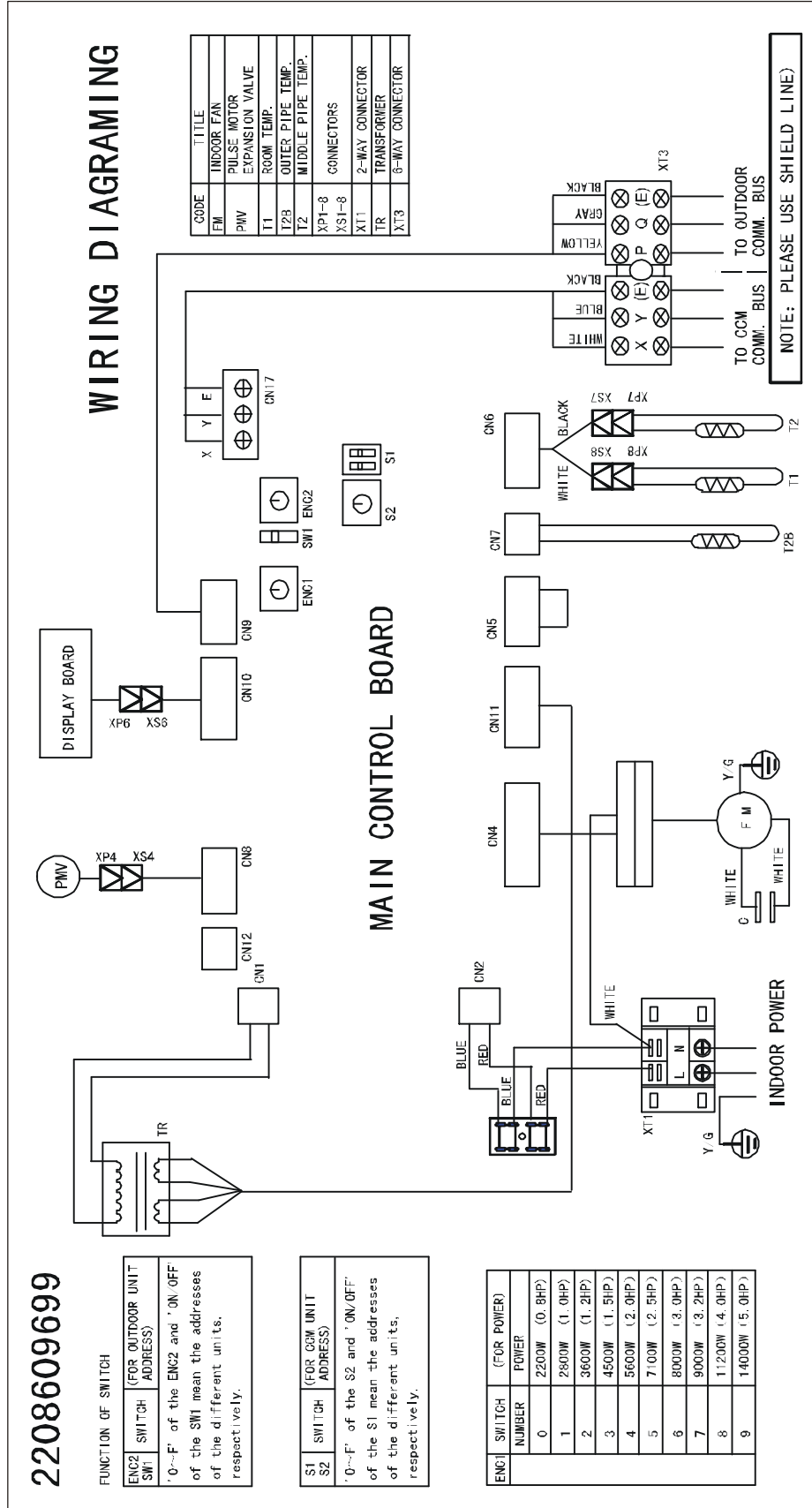


3.5 Wiring diagrams

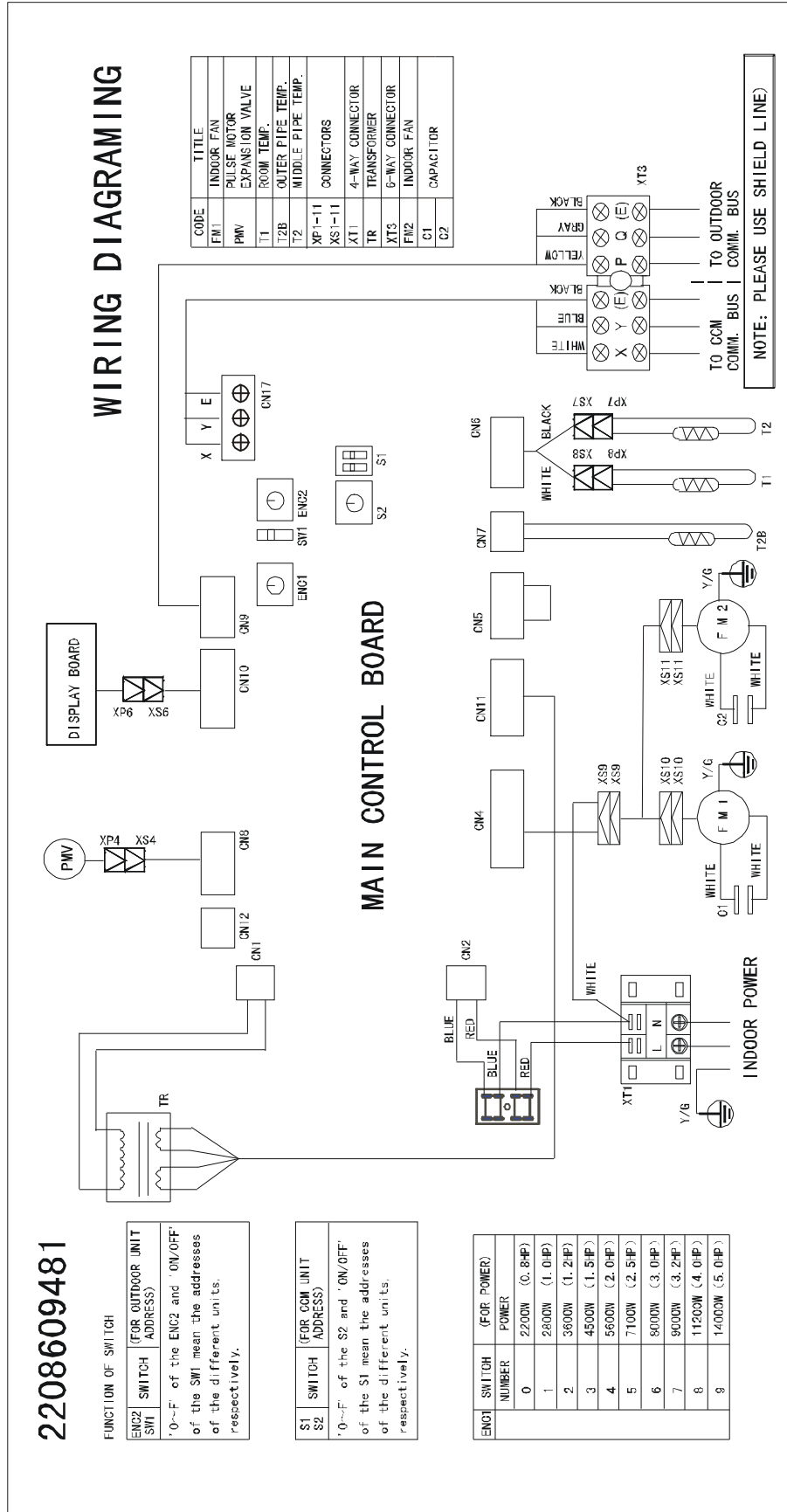
3.5.1 MDV-D22T2/N1-A3 MDV-D28T2/N1-A3 MDV-D36T2/N1-A3



3.5.2 MDV-D45T2/CN1 MDV-D56T2/CN1 MDV-D71T2/CN1 MDV-D80T2/CN1



3.5.3 MDV-D90T2/CN1 MDV-D112T2/CN1 MDV-D140T2/CN1



3.6 Capacity table

3.6.1 Cooling

TC: total capacity SHC: sensible capacity

Indoor Unit size(kW)	Outdoor temperature (°c ,DB)	Indoor temperature (°c,WB)													
		14		16		18		19		20		22		24	
		TC	SHC	TC	SHC	TC	SHC	TC	SHC	TC	SHC	TC	SHC	TC	SHC
		kW	kW	kW	kW	kW	kW	kW	kW	kW	kW	kW	kW	kW	kW
2.2	10	1.4	1.2	1.8	1.3	2.2	1.5	2.4	1.6	2.6	1.7	3.0	1.8	3.4	2.0
	12	1.4	1.2	1.8	1.3	2.2	1.5	2.4	1.6	2.6	1.7	3.0	1.8	3.4	2.0
	14	1.4	1.2	1.8	1.3	2.2	1.5	2.4	1.6	2.6	1.7	3.0	1.8	3.4	2.0
	16	1.4	1.2	1.8	1.3	2.2	1.5	2.4	1.6	2.6	1.7	3.0	1.8	3.4	2.0
	18	1.4	1.2	1.8	1.3	2.2	1.5	2.4	1.6	2.6	1.7	3.0	1.8	3.4	2.0
	20	1.4	1.2	1.8	1.3	2.2	1.5	2.4	1.6	2.6	1.7	3.0	1.8	3.4	2.0
	21	1.4	1.2	1.8	1.3	2.2	1.5	2.4	1.6	2.6	1.7	3.0	1.8	3.4	2.0
	23	1.4	1.2	1.8	1.3	2.2	1.5	2.4	1.6	2.6	1.7	3.0	1.8	3.4	2.0
	25	1.4	1.2	1.8	1.3	2.2	1.5	2.4	1.6	2.6	1.7	3.0	1.8	3.4	2.0
	27	1.4	1.2	1.8	1.3	2.2	1.5	2.4	1.6	2.6	1.7	3.0	1.8	3.4	2.0
	29	1.4	1.2	1.8	1.3	2.2	1.5	2.4	1.6	2.6	1.7	3.0	1.8	3.4	2.0
	31	1.4	1.2	1.8	1.3	2.2	1.5	2.4	1.6	2.6	1.7	3.0	1.8	3.4	2.0
	33	1.3	1.1	1.7	1.2	2.1	1.4	2.3	1.5	2.5	1.6	2.9	1.7	3.3	1.9
	35	1.3	1.1	1.7	1.2	2.1	1.4	2.2	1.5	2.5	1.6	2.9	1.7	3.3	1.9
37	1.3	1.1	1.7	1.2	2.1	1.4	2.2	1.5	2.5	1.6	2.9	1.7	3.3	1.9	
39	1.3	1.1	1.7	1.2	2.1	1.4	2.2	1.5	2.5	1.6	2.9	1.7	3.3	1.9	
2.8	10	2.0	1.7	2.4	1.8	2.8	2.0	3.0	2.1	3.2	2.2	3.6	2.3	4.0	2.6
	12	2.0	1.7	2.4	1.8	2.8	2.0	3.0	2.1	3.2	2.2	3.6	2.3	4.0	2.6
	14	2.0	1.7	2.4	1.8	2.8	2.0	3.0	2.1	3.2	2.2	3.6	2.3	4.0	2.6
	16	2.0	1.7	2.4	1.8	2.8	2.0	3.0	2.1	3.2	2.2	3.6	2.3	4.0	2.6
	18	2.0	1.7	2.4	1.8	2.8	2.0	3.0	2.1	3.2	2.2	3.6	2.3	4.0	2.6
	20	2.0	1.7	2.4	1.8	2.8	2.0	3.0	2.1	3.2	2.2	3.6	2.3	4.0	2.6
	21	2.0	1.7	2.4	1.8	2.8	2.0	3.0	2.1	3.2	2.2	3.6	2.3	4.0	2.6
	23	2.0	1.7	2.4	1.8	2.8	2.0	3.0	2.1	3.2	2.2	3.6	2.3	4.0	2.6
	25	2.0	1.7	2.4	1.8	2.8	2.0	3.0	2.1	3.2	2.2	3.6	2.3	4.0	2.6
	27	2.0	1.7	2.4	1.8	2.8	2.0	3.0	2.1	3.2	2.2	3.6	2.3	4.0	2.6
	29	2.0	1.7	2.4	1.8	2.8	2.0	3.0	2.1	3.2	2.2	3.6	2.3	4.0	2.6
	31	2.0	1.7	2.4	1.8	2.8	2.0	3.0	2.1	3.2	2.2	3.6	2.3	4.0	2.6
	33	1.9	1.6	2.3	1.7	2.7	1.9	2.9	2.0	3.1	2.1	3.5	2.2	3.9	2.4
	35	1.9	1.6	2.3	1.7	2.7	1.9	2.8	2.0	3.1	2.1	3.5	2.2	3.9	2.4
37	1.9	1.6	2.3	1.7	2.7	1.9	2.8	2.0	3.1	2.1	3.5	2.2	3.9	2.4	
39	1.9	1.6	2.3	1.7	2.7	1.9	2.8	2.0	3.1	2.1	3.5	2.2	3.9	2.4	

TC: total capacity SHC: sensible capacity

Indoor Unit size(kW)	Outdoor temperature (°c ,DB)	Indoor temperature (°c,WB)													
		14		16		18		19		20		22		24	
		TC	SHC	TC	SHC	TC	SHC	TC	SHC	TC	SHC	TC	SHC	TC	SHC
		kW	kW	kW	kW	kW	kW	kW	kW	kW	kW	kW	kW	kW	kW
3.6	10	2.8	2.5	3.2	2.7	3.6	2.9	3.8	3.0	4.0	3.1	4.4	3.2	4.8	3.3
	12	2.8	2.5	3.2	2.7	3.6	2.9	3.8	3.0	4.0	3.1	4.4	3.2	4.8	3.3
	14	2.8	2.5	3.2	2.7	3.6	2.9	3.8	3.0	4.0	3.1	4.4	3.2	4.8	3.3
	16	2.8	2.5	3.2	2.7	3.6	2.9	3.8	3.0	4.0	3.1	4.4	3.2	4.8	3.3
	18	2.8	2.5	3.2	2.7	3.6	2.9	3.8	3.0	4.0	3.1	4.4	3.2	4.8	3.3
	20	2.8	2.5	3.2	2.7	3.6	2.9	3.8	3.0	4.0	3.1	4.4	3.2	4.8	3.3
	21	2.8	2.5	3.2	2.7	3.6	2.9	3.8	3.0	4.0	3.1	4.4	3.2	4.8	3.3
	23	2.8	2.5	3.2	2.7	3.6	2.9	3.8	3.0	4.0	3.1	4.4	3.2	4.8	3.3
	25	2.8	2.5	3.2	2.7	3.6	2.9	3.8	3.0	4.0	3.1	4.4	3.2	4.8	3.3
	27	2.8	2.5	3.2	2.7	3.6	2.9	3.8	3.0	4.0	3.1	4.4	3.2	4.8	3.3
	29	2.8	2.5	3.2	2.7	3.6	2.9	3.8	3.0	4.0	3.1	4.4	3.2	4.8	3.3
	31	2.7	2.4	3.1	2.6	3.5	2.8	3.7	2.9	3.9	3.0	4.3	3.1	4.7	3.2
	33	2.7	2.4	3.1	2.6	3.5	2.8	3.7	2.9	3.9	3.0	4.3	3.1	4.7	3.2
	35	2.7	2.4	3.1	2.6	3.5	2.8	3.6	2.9	3.9	3.0	4.3	3.1	4.7	3.2
	37	2.7	2.4	3.1	2.6	3.5	2.8	3.6	2.9	3.9	3.0	4.3	3.1	4.7	3.2
39	2.7	2.4	3.1	2.6	3.5	2.8	3.6	2.9	3.9	3.0	4.3	3.1	4.7	3.2	
4.5	10	3.3	3.0	3.9	3.3	4.4	3.7	4.8	3.8	5.1	3.9	5.6	4.0	6.2	4.1
	12	3.3	3.0	3.9	3.3	4.4	3.7	4.8	3.8	5.1	3.9	5.6	4.0	6.2	4.1
	14	3.3	3.0	3.9	3.3	4.4	3.7	4.8	3.8	5.1	3.9	5.6	4.0	6.2	4.1
	16	3.3	3.0	3.9	3.3	4.4	3.7	4.8	3.8	5.1	3.9	5.6	4.0	6.2	4.1
	18	3.3	3.0	3.9	3.3	4.4	3.7	4.8	3.8	5.1	3.9	5.6	4.0	6.2	4.1
	20	3.3	3.0	3.9	3.3	4.4	3.7	4.8	3.8	5.1	3.9	5.6	4.0	6.2	4.1
	21	3.2	2.9	3.8	3.2	4.3	3.6	4.7	3.7	5.0	3.8	5.5	4.0	6.1	4.1
	23	3.2	2.9	3.8	3.2	4.3	3.6	4.7	3.7	5.0	3.8	5.5	4.0	6.1	4.1
	25	3.2	2.9	3.8	3.2	4.3	3.6	4.7	3.7	5.0	3.8	5.5	4.0	6.1	4.1
	27	3.2	2.9	3.8	3.2	4.3	3.6	4.7	3.7	5.0	3.8	5.5	4.0	6.1	4.1
	29	3.2	2.9	3.8	3.2	4.3	3.6	4.7	3.7	5.0	3.8	5.5	4.0	6.1	4.1
	31	3.2	2.9	3.8	3.2	4.3	3.6	4.7	3.7	5.0	3.8	5.5	4.0	6.1	4.1
	33	3.2	2.9	3.8	3.2	4.3	3.6	4.7	3.7	5.0	3.8	5.5	4.0	6.1	4.1
	35	3.1	2.8	3.7	3.1	4.2	3.5	4.5	3.6	4.9	3.7	5.4	3.9	6.0	4.0
	37	3.1	2.8	3.7	3.1	4.2	3.5	4.5	3.6	4.9	3.7	5.4	3.9	6.0	4.0
39	3.1	2.8	3.7	3.1	4.2	3.5	4.5	3.6	4.8	3.7	5.3	3.8	5.9	3.9	

TC: total capacity SHC: sensible capacity

Indoor Unit size(kW)	Outdoor temperature (°c ,DB)	Indoor temperature (°c,WB)													
		14		16		18		19		20		22		24	
		TC	SHC	TC	SHC	TC	SHC	TC	SHC	TC	SHC	TC	SHC	TC	SHC
		kW	kW	kW	kW	kW	kW	kW	kW	kW	kW	kW	kW	kW	kW
5.6	10	4.3	3.7	4.9	3.9	5.5	4.2	5.8	4.3	6.1	4.4	6.7	4.5	7.3	4.6
	12	4.3	3.7	4.9	3.9	5.5	4.2	5.8	4.3	6.1	4.4	6.7	4.5	7.3	4.6
	14	4.3	3.7	4.9	3.9	5.5	4.2	5.8	4.3	6.1	4.4	6.7	4.5	7.3	4.6
	16	4.3	3.7	4.9	3.9	5.5	4.2	5.8	4.3	6.1	4.4	6.7	4.5	7.3	4.6
	18	4.3	3.7	4.9	3.9	5.5	4.2	5.8	4.3	6.1	4.4	6.7	4.5	7.3	4.6
	20	4.3	3.7	4.9	3.9	5.5	4.2	5.8	4.3	6.1	4.4	6.7	4.5	7.3	4.6
	21	4.3	3.7	4.9	3.9	5.5	4.2	5.8	4.3	6.1	4.4	6.7	4.5	7.3	4.6
	23	4.3	3.7	4.9	3.9	5.5	4.2	5.8	4.3	6.1	4.4	6.7	4.5	7.3	4.6
	25	4.3	3.7	4.9	3.9	5.5	4.2	5.8	4.3	6.1	4.4	6.7	4.5	7.3	4.6
	27	4.3	3.7	4.9	3.9	5.5	4.2	5.8	4.3	6.1	4.4	6.7	4.5	7.3	4.6
	29	4.3	3.7	4.9	3.9	5.5	4.2	5.8	4.3	6.1	4.4	6.7	4.5	7.3	4.6
	31	4.3	3.7	4.9	3.9	5.5	4.2	5.8	4.3	6.1	4.4	6.7	4.5	7.3	4.6
	33	4.2	3.6	4.8	3.8	5.4	4.1	5.7	4.2	6.0	4.3	6.6	4.4	7.2	4.5
	35	4.2	3.6	4.8	3.8	5.4	4.1	5.6	4.2	6.0	4.3	6.6	4.4	7.2	4.5
	37	4.2	3.6	4.8	3.8	5.4	4.1	5.6	4.2	6.0	4.3	6.6	4.4	7.2	4.5
39	4.2	3.6	4.8	3.8	5.4	4.1	5.6	4.2	6.0	4.3	6.6	4.4	7.2	4.5	
7.1	10	5.3	4.7	6.1	5.1	6.9	5.4	7.3	5.6	7.7	5.8	8.5	6.0	9.3	6.2
	12	5.3	4.7	6.1	5.1	6.9	5.4	7.3	5.6	7.7	5.8	8.5	6.0	9.3	6.2
	14	5.3	4.7	6.1	5.1	6.9	5.4	7.3	5.6	7.7	5.8	8.5	6.0	9.3	6.2
	16	5.3	4.7	6.1	5.1	6.9	5.4	7.3	5.6	7.7	5.8	8.5	6.0	9.3	6.2
	18	5.3	4.7	6.1	5.1	6.9	5.4	7.3	5.6	7.7	5.8	8.5	6.0	9.3	6.2
	20	5.3	4.7	6.1	5.1	6.9	5.4	7.3	5.6	7.7	5.8	8.5	6.0	9.3	6.2
	21	5.3	4.7	6.1	5.1	6.9	5.4	7.3	5.6	7.7	5.8	8.5	6.0	9.3	6.2
	23	5.3	4.7	6.1	5.1	6.9	5.4	7.3	5.6	7.7	5.8	8.5	6.0	9.3	6.2
	25	5.3	4.7	6.1	5.1	6.9	5.4	7.3	5.6	7.7	5.8	8.5	6.0	9.3	6.2
	27	5.3	4.7	6.1	5.1	6.9	5.4	7.3	5.6	7.7	5.8	8.5	6.0	9.3	6.2
	29	5.3	4.7	6.1	5.1	6.9	5.4	7.3	5.6	7.7	5.8	8.5	6.0	9.3	6.2
	31	5.2	4.6	6.0	5.0	6.8	5.3	7.2	5.5	7.6	5.7	8.4	5.9	9.2	6.1
	33	5.2	4.6	6.0	5.0	6.8	5.3	7.2	5.5	7.6	5.7	8.4	5.9	9.2	6.1
	35	5.2	4.6	6.0	5.0	6.8	5.3	7.1	5.5	7.6	5.7	8.4	5.9	9.2	6.1
	37	5.2	4.6	6.0	5.0	6.8	5.3	7.1	5.5	7.6	5.7	8.4	5.9	9.2	6.1
39	5.2	4.6	6.0	5.0	6.8	5.3	7.1	5.5	7.6	5.7	8.4	5.9	9.2	6.1	

TC: total capacity SHC: sensible capacity

Indoor Unit size(kW)	Outdoor temperature (°c ,DB)	Indoor temperature (°c,WB)													
		14		16		18		19		20		22		24	
		TC	SHC	TC	SHC	TC	SHC	TC	SHC	TC	SHC	TC	SHC	TC	SHC
		kW	kW	kW	kW	kW	kW	kW	kW	kW	kW	kW	kW	kW	kW
8.0	10	5.8	5.4	6.8	5.8	7.8	6.0	8.4	6.2	9.0	6.4	10.0	6.6	11.0	6.8
	12	5.8	5.4	6.8	5.8	7.8	6.0	8.4	6.2	9.0	6.4	10.0	6.6	11.0	6.8
	14	5.8	5.4	6.8	5.8	7.8	6.0	8.4	6.2	9.0	6.4	10.0	6.6	11.0	6.8
	16	5.8	5.4	6.8	5.8	7.8	6.0	8.4	6.2	9.0	6.4	10.0	6.6	11.0	6.8
	18	5.8	5.4	6.8	5.8	7.8	6.0	8.4	6.2	9.0	6.4	10.0	6.6	11.0	6.8
	20	5.8	5.4	6.8	5.8	7.8	6.0	8.4	6.2	9.0	6.4	10.0	6.6	11.0	6.8
	21	5.8	5.4	6.8	5.8	7.8	6.0	8.4	6.2	9.0	6.4	10.0	6.6	11.0	6.8
	23	5.8	5.4	6.8	5.8	7.8	6.0	8.4	6.2	9.0	6.4	10.0	6.6	11.0	6.8
	25	5.8	5.4	6.8	5.8	7.8	6.0	8.4	6.2	9.0	6.4	10.0	6.6	11.0	6.8
	27	5.8	5.4	6.8	5.8	7.8	6.0	8.4	6.2	9.0	6.4	10.0	6.6	11.0	6.8
	29	5.8	5.4	6.8	5.8	7.8	6.0	8.4	6.2	9.0	6.4	10.0	6.6	11.0	6.8
	31	5.8	5.4	6.8	5.8	7.8	6.0	8.4	6.2	9.0	6.4	10.0	6.6	11.0	6.8
	33	5.7	5.3	6.7	5.7	7.7	5.9	8.2	6.0	8.8	6.2	9.8	6.4	10.8	6.6
	35	5.7	5.3	6.7	5.7	7.7	5.9	8.0	6.0	8.8	6.2	9.8	6.4	10.8	6.6
	37	5.7	5.3	6.7	5.7	7.7	5.9	8.0	6.0	8.8	6.2	9.8	6.4	10.8	6.6
39	5.7	5.3	6.7	5.7	7.7	5.9	8.0	6.0	8.8	6.2	9.8	6.4	10.8	6.6	
9.0	10	6.2	5.8	7.4	6.4	8.6	6.8	9.2	7.1	9.8	7.3	11.0	7.4	12.0	7.5
	12	6.2	5.8	7.4	6.4	8.6	6.8	9.2	7.1	9.8	7.3	11.0	7.4	12.0	7.5
	14	6.2	5.8	7.4	6.4	8.6	6.8	9.2	7.1	9.8	7.3	11.0	7.4	12.0	7.5
	16	6.2	5.8	7.4	6.4	8.6	6.8	9.2	7.1	9.8	7.3	11.0	7.4	12.0	7.5
	18	6.2	5.8	7.4	6.4	8.6	6.8	9.2	7.1	9.8	7.3	11.0	7.4	12.0	7.5
	20	6.2	5.8	7.4	6.4	8.6	6.8	9.2	7.1	9.8	7.3	11.0	7.4	12.0	7.5
	21	6.2	5.8	7.4	6.4	8.6	6.8	9.2	7.1	9.8	7.3	11.0	7.4	12.0	7.5
	23	6.2	5.8	7.4	6.4	8.6	6.8	9.2	7.1	9.8	7.3	11.0	7.4	12.0	7.5
	25	6.2	5.8	7.4	6.4	8.6	6.8	9.2	7.1	9.8	7.3	11.0	7.4	12.0	7.5
	27	6.2	5.8	7.4	6.4	8.6	6.8	9.2	7.1	9.8	7.3	11.0	7.4	12.0	7.5
	29	6.2	5.8	7.4	6.4	8.6	6.8	9.2	7.1	9.8	7.3	11.0	7.4	12.0	7.5
	31	6.2	5.8	7.4	6.4	8.6	6.8	9.2	7.1	9.8	7.3	11.0	7.4	12.0	7.5
	33	6.0	5.6	7.2	6.2	8.4	6.6	9.0	6.9	9.6	7.1	10.8	7.2	11.8	7.3
	35	6.0	5.6	7.2	6.2	8.4	6.6	9.0	6.9	9.6	7.1	10.8	7.2	11.8	7.3
	37	6.0	5.6	7.2	6.2	8.4	6.6	9.0	6.9	9.6	7.1	10.8	7.2	11.8	7.3
39	6.0	5.6	7.2	6.2	8.4	6.6	9.0	6.9	9.6	7.1	10.8	7.2	11.8	7.3	

TC: total capacity SHC: sensible capacity

Indoor Unit size(kW)	Outdoor temperature (°c ,DB)	Indoor temperature (°c,WB)													
		14		16		18		19		20		22		24	
		TC	SHC	TC	SHC	TC	SHC	TC	SHC	TC	SHC	TC	SHC	TC	SHC
		kW	kW	kW	kW	kW	kW	kW	kW	kW	kW	kW	kW	kW	kW
11.2	10	8.4	7.4	9.6	8.0	10.8	8.8	11.4	9.0	12.0	9.2	13.2	9.4	14.6	9.6
	12	8.4	7.4	9.6	8.0	10.8	8.8	11.4	9.0	12.0	9.2	13.2	9.4	14.6	9.6
	14	8.4	7.4	9.6	8.0	10.8	8.8	11.4	9.0	12.0	9.2	13.2	9.4	14.6	9.6
	16	8.4	7.4	9.6	8.0	10.8	8.8	11.4	9.0	12.0	9.2	13.2	9.4	14.6	9.6
	18	8.4	7.4	9.6	8.0	10.8	8.8	11.4	9.0	12.0	9.2	13.2	9.4	14.6	9.6
	20	8.4	7.4	9.6	8.0	10.8	8.8	11.4	9.0	12.0	9.2	13.2	9.4	14.6	9.6
	21	8.4	7.4	9.6	8.0	10.8	8.8	11.4	9.0	12.0	9.2	13.2	9.4	14.6	9.6
	23	8.4	7.4	9.6	8.0	10.8	8.8	11.4	9.0	12.0	9.2	13.2	9.4	14.6	9.6
	25	8.4	7.4	9.6	8.0	10.8	8.8	11.4	9.0	12.0	9.2	13.2	9.4	14.6	9.6
	27	8.4	7.4	9.6	8.0	10.8	8.8	11.4	9.0	12.0	9.2	13.2	9.4	14.6	9.6
	29	8.4	7.4	9.6	8.0	10.8	8.8	11.4	9.0	12.0	9.2	13.2	9.4	14.6	9.6
	31	8.3	7.3	9.5	7.9	10.7	8.7	11.3	8.9	11.9	9.1	13.1	9.3	14.5	9.5
	33	8.3	7.3	9.5	7.9	10.7	8.7	11.3	8.9	11.9	9.1	13.1	9.3	14.5	9.5
	35	8.3	7.3	9.5	7.9	10.7	8.7	11.2	8.9	11.9	9.1	13.1	9.3	14.5	9.5
	37	8.2	7.2	9.4	7.8	10.6	8.6	11.2	8.8	11.8	9.0	13.0	9.2	14.4	9.4
	39	8.2	7.2	9.4	7.8	10.6	8.6	11.2	8.8	11.8	9.0	13.0	9.2	14.4	9.4
14.0	10	10.0	8.6	11.4	9.2	13.2	10.1	14.0	10.3	14.9	10.5	16.6	10.7	18.4	11.0
	12	10.0	8.6	11.4	9.2	13.2	10.1	14.0	10.3	14.9	10.5	16.6	10.7	18.4	11.0
	14	10.0	8.6	11.4	9.2	13.2	10.1	14.0	10.3	14.9	10.5	16.6	10.7	18.4	11.0
	16	10.0	8.6	11.4	9.2	13.2	10.1	14.0	10.3	14.9	10.5	16.6	10.7	18.4	11.0
	18	10.0	8.6	11.4	9.2	13.2	10.1	14.0	10.3	14.9	10.5	16.6	10.7	18.4	11.0
	20	10.0	8.6	11.4	9.2	13.2	10.1	14.0	10.3	14.9	10.5	16.6	10.7	18.4	11.0
	21	10.0	8.6	11.4	9.2	13.2	10.1	14.0	10.3	14.9	10.5	16.6	10.7	18.4	11.0
	23	10.0	8.6	11.4	9.2	13.2	10.1	14.0	10.3	14.9	10.5	16.6	10.7	18.4	11.0
	25	10.0	8.6	11.4	9.2	13.2	10.1	14.0	10.3	14.9	10.5	16.6	10.7	18.4	11.0
	27	10.0	8.6	11.4	9.2	13.2	10.1	14.0	10.3	14.9	10.5	16.6	10.7	18.4	11.0
	29	10.0	8.6	11.4	9.2	13.2	10.1	14.0	10.3	14.9	10.5	16.6	10.7	18.4	11.0
	31	9.9	8.5	11.3	9.1	13.1	10.0	13.9	10.2	14.8	10.4	16.5	10.6	18.3	10.9
	33	9.9	8.5	11.3	9.1	13.1	10.0	13.9	10.2	14.8	10.4	16.5	10.6	18.3	10.9
	35	9.9	8.5	11.3	9.1	13.1	10.0	13.9	10.2	14.8	10.4	16.5	10.6	18.3	10.9
	37	9.8	8.4	11.2	9.0	13.0	9.9	13.8	10.1	14.7	10.3	16.4	10.5	18.2	10.8
	39	9.8	8.4	11.2	9.0	13.0	9.9	13.8	10.1	14.7	10.3	16.4	10.5	18.2	10.8

3.6.2 Heating

TC: total capacity

Indoor Unit size(kW)	Outdoor temperature		Indoor temperature (°c,)DB					
			14	16	18	20	22	24
	DB	WB	TC	TC	TC	TC	TC	TC
			kW	kW	kW	kW	KW	Kw
2.2	-15.0	-15.8	1.8	1.8	1.7	17	1.6	1.6
	-14.0	-14.8	1.8	1.8	1.8	1.8	1.7	1.6
	-12.0	-12.8	1.9	1.9	1.9	18	1.7	1.6
	-10.0	-10.8	1.9	1.9	1.9	19	1.8	1.7
	-8.0	-8.8	1.9	1.9	1.9	19	1.9	1.8
	-6.0	-7.0	2.1	2.1	2.1	2.1	2.0	1.9
	-4.0	-5.0	2.2	2.2	2.2	2.2	2.1	2.0
	-2.0	-3.0	2.4	2.4	2.4	2.4	2.2	2.0
	0.0	-1.0	2.6	2.6	2.6	2.5	2.3	2.1
	3.0	2.0	2.8	2.7	26	2.6	2.4	2.2
	5.0	4.0	3.0	2.9	2.8	2.6	2.4	2.2
	7.0	6.0	3.0	2.9	2.8	2.6	2.4	2.2
	9.0	8.0	3.0	2.9	2.8	2.6	2.4	2.2
	11	10.0	3.0	2.9	2.8	2.6	2.4	2.2
	13	12.0	3.0	2.9	2.8	2.6	2.4	2.2
15	14.0	3.0	2.9	2.8	2.6	2.4	2.2	
2.8	-15.0	-15.8	2.0	2.0	1.9	1.9	1.8	1.8
	-14.0	-14.8	2.0	2.0	2.0	2.0	2.0	2.0
	-12.0	-12.8	2.2	2.2	2.2	2.1	2.1	2.1
	-10.0	-10.8	2.4	2.4	2.4	2.2	2.2	2.2
	-8.0	-8.8	2.6	2.6	2.6	2.3	2.3	2.3
	-6.0	-7.0	2.8	2.8	2.8	2.4	2.4	2.4
	-4.0	-5.0	3.0	3.0	3.0	2.6	2.6	2.6
	-2.0	-3.0	3.2	3.2	3.2	2.8	2.8	2.8
	0.0	-1.0	3.5	3.5	3.4	3.0	3.0	3.0
	3.0	2.0	3.6	3.5	3.4	3.2	3.0	2.8
	5.0	4.0	3.6	3.5	3.4	3.2	3.0	2.8
	7.0	6.0	3.6	3.5	3.4	3.2	3.0	2.8
	9.0	8.0	3.6	3.5	3.4	3.2	3.0	2.8
	11	10.0	3.6	3.5	3.4	3.2	3.0	2.8
	13	12.0	3.6	3.5	3.4	3.2	3.0	2.8
15	14.0	3.6	3.5	3.4	3.2	3.0	2.8	

TC: total capacity

Indoor Unit size(KW)	Outdoor temperature		Indoor temperature (°c,)DB					
	DB	WB	14	16	18	20	22	24
			TC	TC	TC	TC	TC	TC
		kW	kW	kW	kW	KW	Kw	
3.6	-15.0	-15.8	2.6	2.6	2.6	2.6	2.5	2.4
	-14.0	-14.8	2.6	2.6	2.6	2.6	2.6	2.6
	-12.0	-12.8	2.8	2.8	2.8	2.7	2.7	2.7
	-10.0	-10.8	3.0	3.0	3.0	2.7	2.7	2.7
	-8.0	-8.8	3.2	3.2	3.2	2.8	2.8	2.8
	-6.0	-7.0	3.4	3.4	3.4	3.0	3.0	3.0
	-4.0	-5.0	3.6	3.6	3.6	3.2	3.2	3.2
	-2.0	-3.0	4.0	4.0	3.7	3.4	3.4	3.4
	0.0	-1.0	4.2	4.2	3.9	3.6	3.6	3.6
	3.0	2.0	4.4	4.4	4.1	3.8	3.8	3.8
	5.0	4.0	4.6	4.6	4.3	4.0	3.7	3.4
	7.0	6.0	4.6	4.6	4.3	4.0	3.7	3.4
	9.0	8.0	4.6	4.6	4.3	4.0	3.7	3.4
	11	10.0	4.6	4.6	4.3	4.0	3.7	3.4
	13	12.0	4.6	4.6	4.3	4.0	3.7	3.4
15	14.0	4.6	4.6	4.3	4.0	3.7	3.4	
4.5	-15.0	-15.8	3.2	3.2	3.1	3.1	3.0	3.0
	-14.0	-14.8	3.5	3.5	3.5	3.2	3.2	3.2
	-12.0	-12.8	3.7	3.7	3.7	3.4	3.4	3.4
	-10.0	-10.8	4.0	4.0	4.0	3.6	3.6	3.6
	-8.0	-8.8	4.3	4.3	4.3	3.8	3.8	3.8
	-6.0	-7.0	4.6	4.6	4.6	4.0	4.0	4.0
	-4.0	-5.0	5.0	5.0	5.0	4.2	4.2	4.0
	-2.0	-3.0	5.3	5.3	5.3	4.4	4.4	4.0
	0.0	-1.0	5.5	5.5	5.3	4.6	4.4	4.2
	3.0	2.0	5.8	5.8	5.4	4.8	4.6	4.2
	5.0	4.0	5.8	5.8	5.4	5.0	4.6	4.2
	7.0	6.0	5.8	5.8	5.4	5.0	4.6	4.2
	9.0	8.0	5.8	5.8	5.4	5.0	4.6	4.2
	11	10.0	5.8	5.8	5.4	5.0	4.6	4.2
	13	12.0	5.8	5.8	5.4	5.0	4.6	4.2
15	14.0	5.8	5.8	5.4	5.0	4.6	4.2	

TC: total capacity

Indoor Unit size(KW)	Outdoor temperature		Indoor temperature (°c,)DB					
			14	16	18	19	20	22
	DB	WB	TC	TC	TC	TC	TC	TC
			kW	kW	kW	kW	KW	Kw
5.6	-15.0	-15.8	4.0	4.0	4.0	4.0	3.8	3.8
	-14.0	-14.8	4.2	4.2	4.2	4.2	4.2	4.2
	-12.0	-12.8	4.4	4.4	4.4	4.4	4.4	4.4
	-10.0	-10.8	4.6	4.6	4.6	4.6	4.6	4.6
	-8.0	-8.8	4.8	4.8	4.8	4.8	4.8	4.8
	-6.0	-7.0	5.2	5.2	5.2	5.1	4.8	4.8
	-4.0	-5.0	5.6	5.6	5.6	5.4	5.1	5.1
	-2.0	-3.0	6.0	6.0	6.0	5.7	5.3	5.1
	0.0	-1.0	6.4	6.4	6.4	6.0	5.5	5.1
	3.0	2.0	6.8	6.8	6.8	6.3	5.8	5.3
	5.0	4.0	6.8	6.8	6.8	6.3	5.8	5.3
	7.0	6.0	6.8	6.8	6.8	6.3	5.8	5.3
	9.0	8.0	6.8	6.8	6.8	6.3	5.8	5.3
	11	10.0	6.8	6.8	6.8	6.3	5.8	5.3
	13	12.0	6.8	6.8	6.8	6.3	5.8	5.3
15	14.0	6.8	6.8	6.8	6.3	5.8	5.3	
7.1	-15.0	-15.8	5.2	5.2	5.0	5.0	4.8	4.8
	-14.0	-14.8	5.3	5.3	5.4	5.3	5.0	4.8
	-12.0	-12.8	5.5	5.5	5.5	5.5	5.3	5.0
	-10.0	-10.8	5.7	5.7	5.7	5.7	5.6	5.0
	-8.0	-8.8	5.9	5.9	5.9	5.9	5.9	5.3
	-6.0	-7.0	6.2	6.2	6.2	6.2	6.2	5.6
	-4.0	-5.0	6.5	6.5	6.5	6.5	6.5	5.9
	-2.0	-3.0	6.8	6.8	6.8	6.8	6.8	6.2
	0.0	-1.0	7.1	7.1	7.1	7.0	7.0	6.5
	3.0	2.0	7.4	7.4	7.4	7.4	7.1	6.8
	5.0	4.0	7.7	7.7	7.7	7.7	7.4	6.8
	7.0	6.0	8.0	8.0	8.0	8.0	7.4	6.8
	9.0	8.0	8.3	8.3	8.3	8.0	7.4	6.8
	11	10.0	8.6	8.6	8.6	8.0	7.4	6.8
	13	12.0	8.6	8.6	8.6	8.0	7.4	6.8
15	14.0	8.6	8.6	8.6	8.0	7.4	6.8	

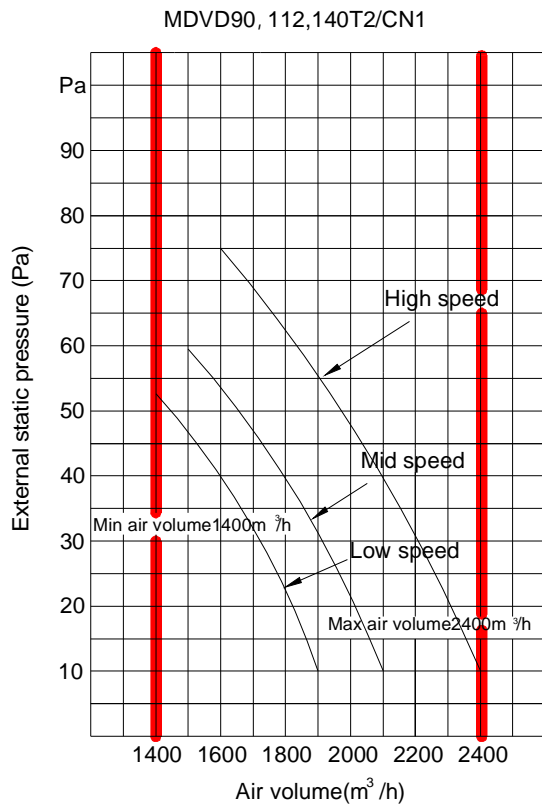
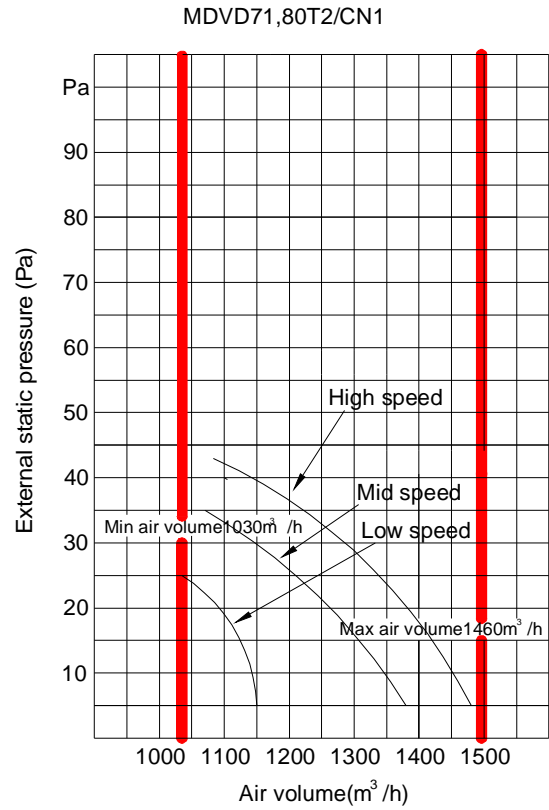
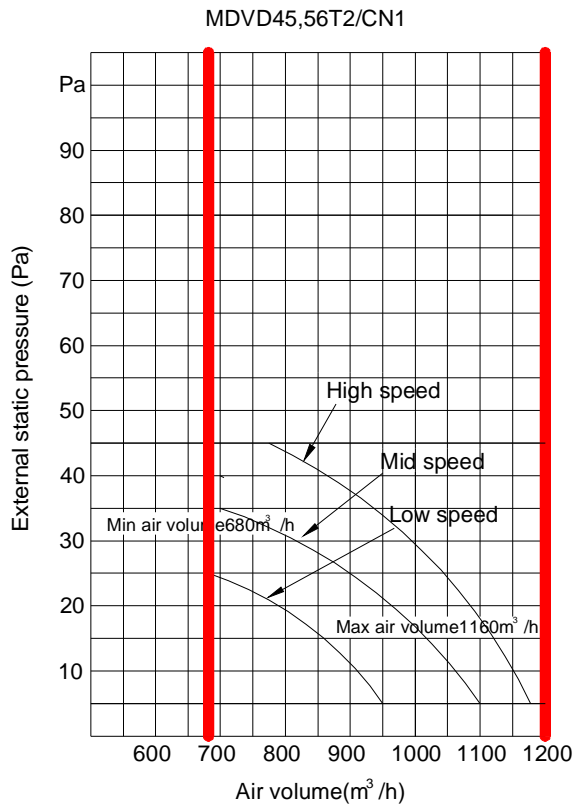
TC: total capacity

Indoor Unit size(KW)	Outdoor temperature		Indoor temperature (°c,)DB					
	DB	WB	14	16	18	19	20	22
			TC kW	TC kW	TC kW	TC kW	TC KW	TC Kw
8.0	-15.0	-15.8	6.3	6.3	6.2	6.2	6.1	6.0
	-14.0	-14.8	6.4	6.4	6.3	6.3	6.3	6.3
	-12.0	-12.8	6.6	6.6	6.5	6.5	6.5	6.5
	-10.0	-10.8	6.8	6.8	6.7	6.7	6.7	6.7
	-8.0	-8.8	7.0	7.0	6.9	6.9	6.9	6.9
	-6.0	-7.0	7.2	7.2	7.1	7.1	7.1	7.1
	-4.0	-5.0	7.5	7.5	7.4	7.4	7.4	7.4
	-2.0	-3.0	7.8	7.8	7.7	7.7	7.7	7.7
	0.0	-1.0	8.1	8.1	7.8	7.8	7.8	7.8
	3.0	2.0	8.4	8.4	7.9	7.9	7.9	7.8
	5.0	4.0	8.7	8.7	8.1	8.1	8.1	7.8
	7.0	6.0	9.0	9.0	8.4	8.4	8.4	7.8
	9.0	8.0	9.3	9.3	8.7	8.7	8.4	7.8
	11	10.0	9.6	9.6	9.0	9.0	8.4	7.8
	13	12.0	9.9	9.9	9.3	9.0	8.4	7.8
15	14.0	10.2	10.2	9.6	9.0	8.4	7.8	
9.0	-15.0	-15.8	6.4	6.4	6.3	6.3	6.2	6.1
	-14.0	-14.8	6.8	6.8	6.7	6.7	6.7	6.6
	-12.0	-12.8	7.2	7.2	7.1	7.1	7.1	7.0
	-10.0	-10.8	7.6	7.6	7.6	7.6	7.6	7.5
	-8.0	-8.8	8.0	8.0	8.0	8.0	8.0	7.9
	-6.0	-7.0	8.4	8.4	8.4	8.4	8.4	8.2
	-4.0	-5.0	8.7	8.7	8.7	8.7	8.7	8.4
	-2.0	-3.0	9.0	9.0	9.0	9.0	9.0	8.4
	0.0	-1.0	9.3	9.3	9.3	9.3	9.2	8.4
	3.0	2.0	9.7	9.7	9.7	9.7	9.2	8.4
	5.0	4.0	10.0	10.0	10.0	10.0	9.2	8.4
	7.0	6.0	10.4	10.4	10.4	10.0	9.2	8.4
	9.0	8.0	10.7	10.7	10.7	10.0	9.2	8.4
	11	10.0	11.0	11.0	10.8	10.0	9.2	8.4
	13	12.0	11.3	11.3	10.8	10.0	9.2	8.4
15	14.0	11.6	11.6	10.8	10.0	9.2	8.4	

TC: total capacity

Indoor Unit size(KW)	Outdoor temperature		Indoor temperature (°c,)DB					
	DB	WB	14	16	18	19	20	22
			TC kW	TC kW	TC kW	TC kW	TC KW	TC Kw
11.2	-15.0	-15.8	8.2	8.2	8.0	8.0	7.9	7.8
	-14.0	-14.8	8.5	8.5	8.5	8.5	8.4	8.3
	-12.0	-12.8	8.8	8.8	8.8	8.8	8.8	8.8
	-10.0	-10.8	9.2	9.2	9.2	9.2	9.2	9.2
	-8.0	-8.8	9.6	9.6	9.6	9.6	9.6	9.6
	-6.0	-7.0	10.0	10.0	10.0	10.0	10.0	9.9
	-4.0	-5.0	10.5	10.5	10.5	10.5	10.5	10.5
	-2.0	-3.0	11.0	11.0	11.0	11.0	11.0	11.0
	0.0	-1.0	11.5	11.5	11.5	11.5	11.4	11.0
	3.0	2.0	12.0	12.0	12.0	12.0	12.0	11.0
	5.0	4.0	12.5	12.5	12.5	12.5	12.0	11.0
	7.0	6.0	13.0	13.0	13.0	13.0	12.0	11.0
	9.0	8.0	13.5	13.5	13.5	13.0	12.0	11.0
	11	10.0	14.0	14.0	14.0	13.0	12.0	11.0
	13	12.0	14.5	14.5	14.0	13.0	12.0	11.0
15	14.0	15.0	15.0	14.0	13.0	12.0	11.0	
14.0	-15.0	-15.8	10.5	10.5	10.5	10.3	10.2	10.0
	-14.0	-14.8	11.0	11.0	11.0	11.0	11.0	10.3
	-12.0	-12.8	11.6	11.6	11.6	11.6	11.6	10.7
	-10.0	-10.8	12.2	12.2	12.2	12.2	12.2	11.1
	-8.0	-8.8	12.8	12.8	12.8	12.8	12.8	11.5
	-6.0	-7.0	13.4	13.4	13.4	13.4	13.4	11.9
	-4.0	-5.0	14.0	14.0	14.0	14.0	13.6	12.3
	-2.0	-3.0	14.6	14.6	14.6	14.0	13.8	12.7
	0.0	-1.0	15.2	15.2	15.2	14.2	13.8	13.1
	3.0	2.0	15.5	15.5	15.5	14.8	14.2	13.5
	5.0	4.0	15.8	15.8	15.8	15.4	14.7	13.5
	7.0	6.0	16.1	16.1	16.1	15.7	14.7	13.5
	9.0	8.0	16.4	16.4	16.4	16.0	14.7	13.5
	11	10.0	16.7	16.7	16.7	16.0	14.7	13.5
	13	12.0	17.0	17.0	17.0	16.0	14.7	13.5
15	14.0	17.3	17.3	17.3	16.0	14.7	13.5	

3.7 Static pressure curve



3.8 Function parts & safety device

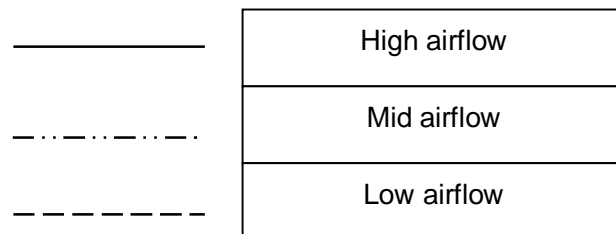
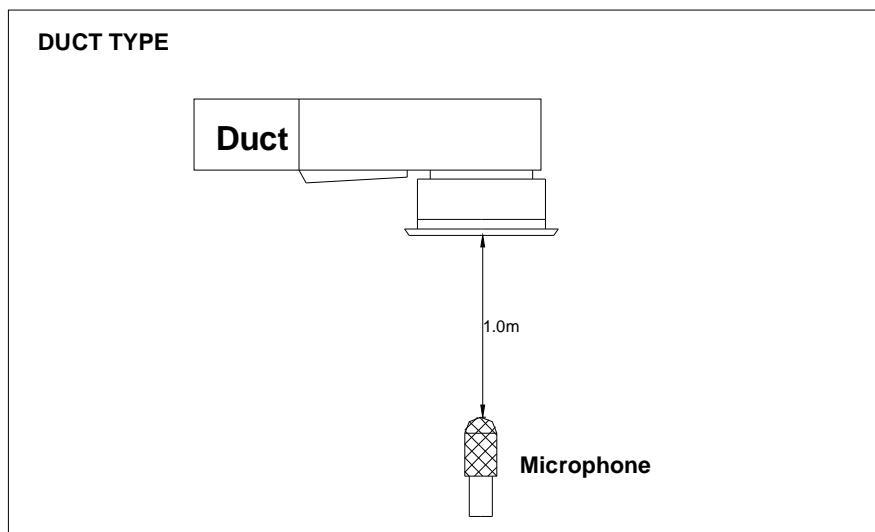
Model MDV-D		22T2/N1-A3	28T2/N1-A3	36T2/N1-A3	45T2/CN1	56T2/CN1
Safety Device	PC board fuse	5A	5A	5A	5A	5A
	Fan motor thermal protector	BW130°C	BW130°C	BW130°C	BW130°C	BW130°C
Functional Device	Electronic throttle kit	CE-DZJLBJ05	CE-DZJLBJ05	CE-DZJLBJ05	CE-DZJLBJ07	CE-DZJLBJ07

Model MDV-D		71T2/CN1	80T2/CN1	90T2/CN1	112T2/CN1	140T2/CN1
Safety Device	PC board fuse	5A	5A	5A	5A	5A
	Fan motor thermal protector	BW130°C	BW130°C	BW130°C	BW130°C	BW130°C
Functional Device	Electronic throttle kit	CE-DZJLBJ07	CE-DZJLBJ07	CE-DZJLBJ08	CE-DZJLBJ08	CE-DZJLBJ08

Remark: BW130°C - cut off at 130°C±15°C and recover at 85°C±15°C

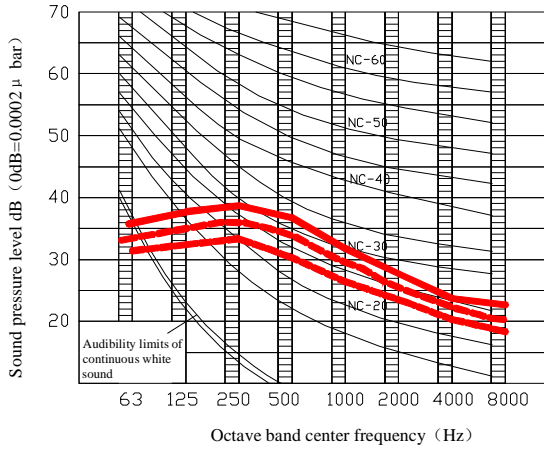
3.9 Sound levels

3.9.1 Test condition

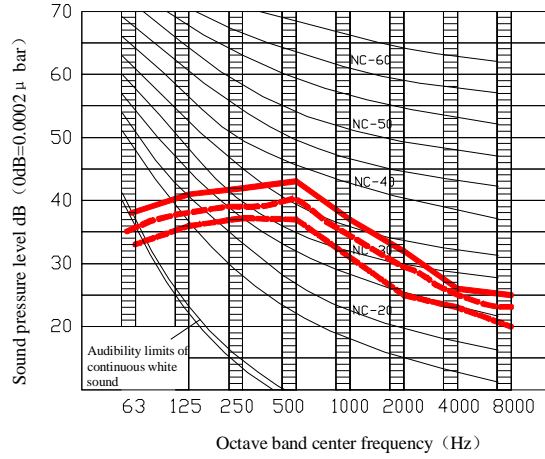


3.9.2 Noise spectrum

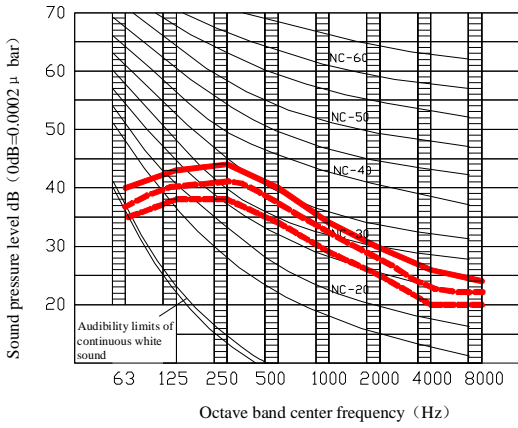
MDV-D22 (28, 36) T₂/N1 -A3



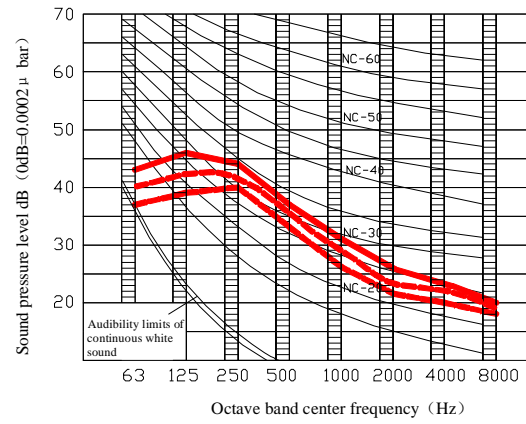
MDV-D45,56T2/CN1



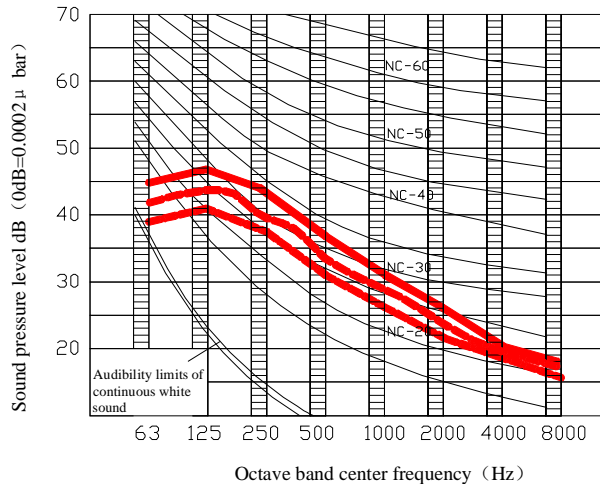
MDV-D71 (80, 90) T2/CN1



MDV-D112T2/CN1

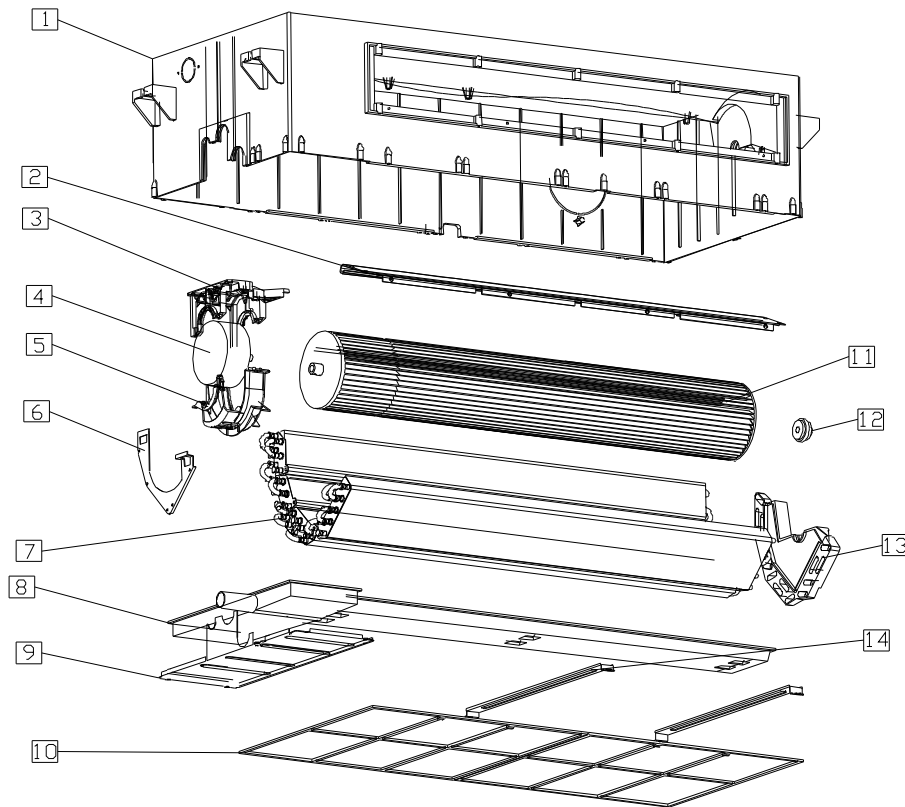


MDV-D140T2/CN1



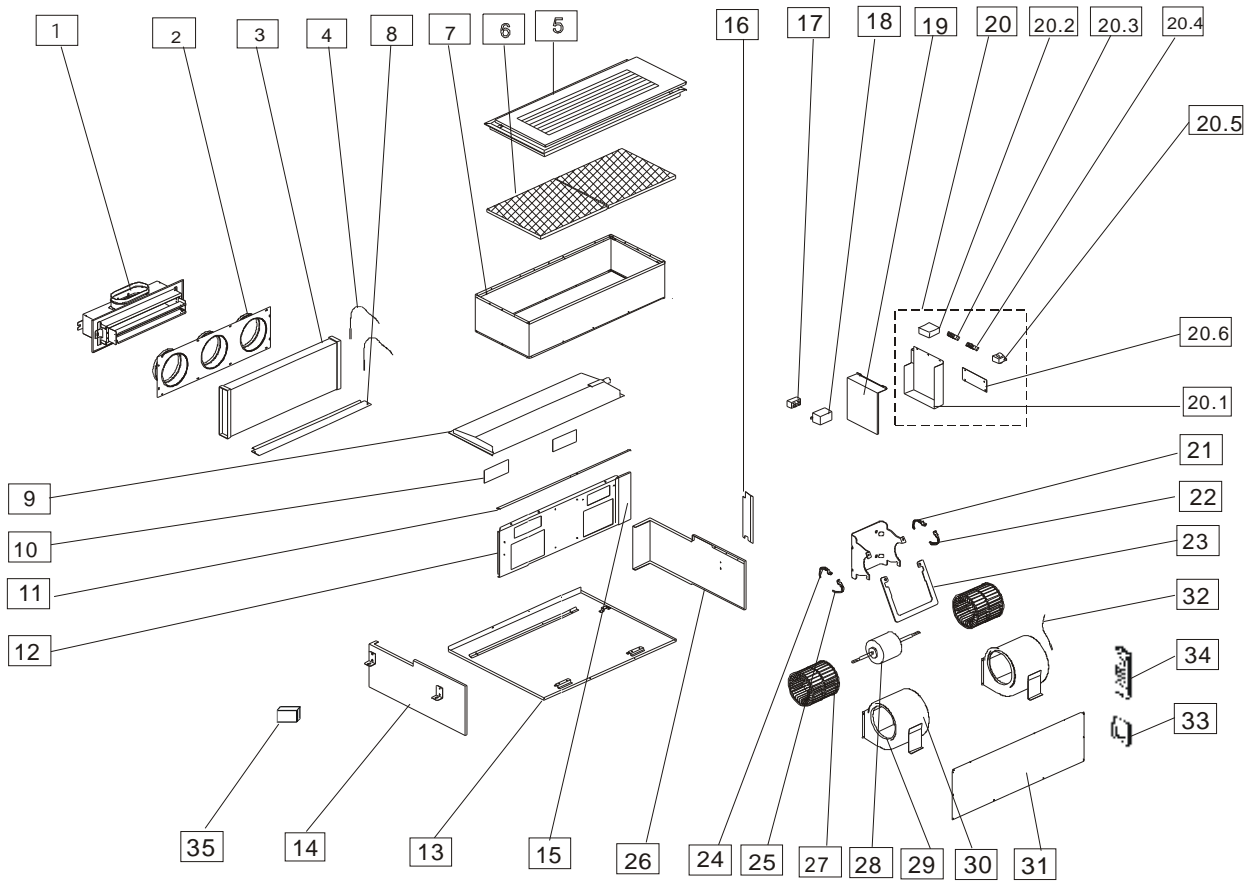
3.10 Exploded view parts

3.10.1 MDV-D22T2/N1-A3 MDV-D28T2/N1-A3 MDV-D36T2/N1-A3



No.	Part Name	Number
1	Base Pan	1
2	Vortex	1
3	Fan Motor Support	1
4	Fan Motor	1
5	Fan motor Cover	1
6	Evaporator Connection board	2
7	Evaporator	1
8	Water Receiver	1
9	Water Receiver Protection Cover	1
10	Filter	1
11	Fan	1
12	Axis Support	1
13	Left support, evaporator	1
14	Fasten Strip, evaporator	1

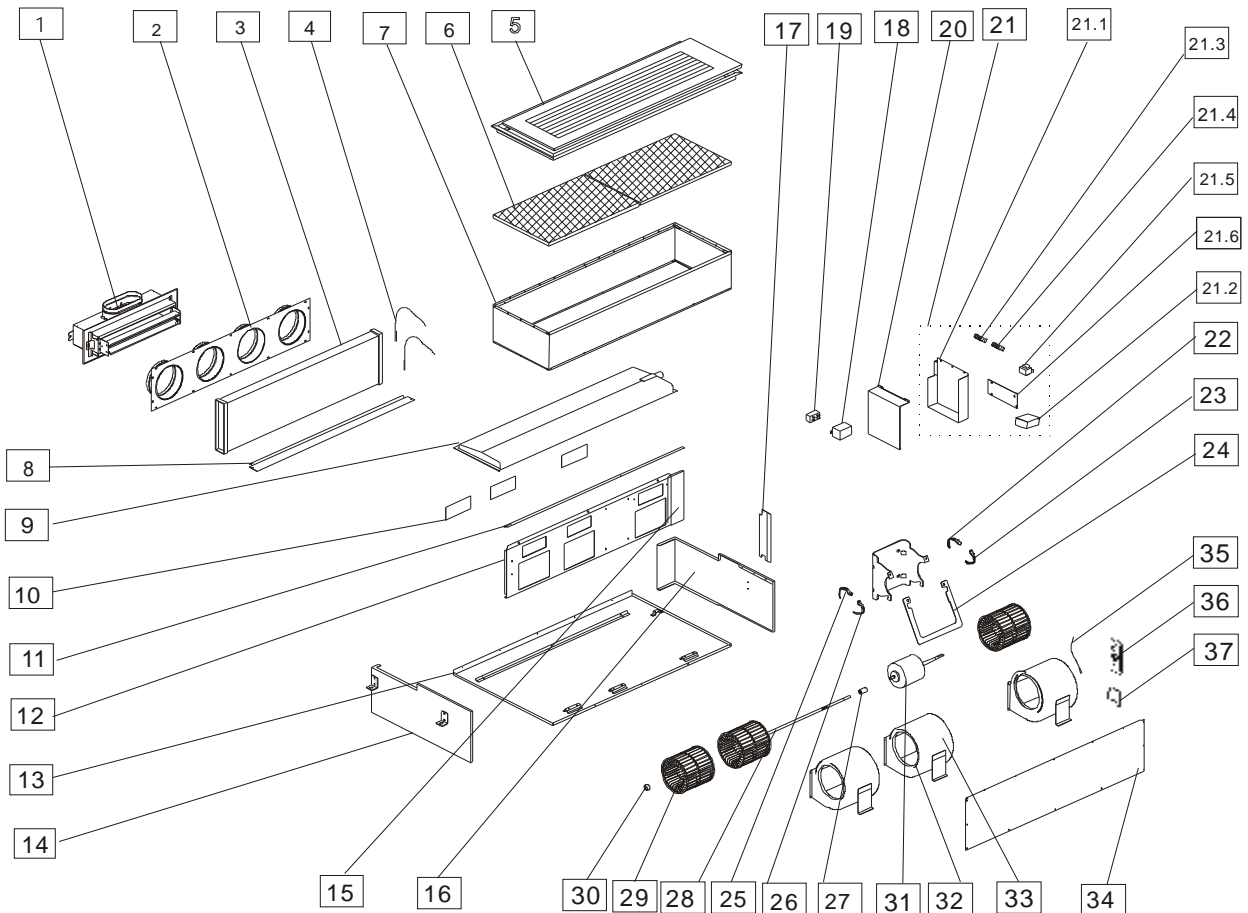
3.10.2 MDV-D45T2/CN1 MDV-D56T2/CN1 MDV-D71T2/CN1 MDV-D80T2/CN1



No.	Part name	Quantity	No.	Part name	Quantity
1	Air-out frame ass'y	3	20	Electronic control ass'y	1
2	Air-out board ass'y	1	20.1	Electronic part box	1
3	Evaporator	1	20.2	Wired joint for multiplexer	1
	Input pipe	1	20.3	wired joint, 3p	1
	Output pipe	1	20.4	Wired joint, 2p	1
4	Evaporator temp sensor	1	20.5	Transformer	1
5	Panel ass'y	1	20.6	Main control board	1
6	Air filter	2	21	Right up fixing clamp for motor	1
7	Canvas passage	1	22	Right down fixing clamp for motor	1
8	Base board for evaporator	1	23	Strengthen board for motor	1
9	Water collector	1	24	Left up fixing clamp for motor	1
10	Sealing board for middle beam	2	25	Left down fixing clamp for motor	1
11	Cover for middle beam	1	26	Right clapboard	1
12	Middle beam	1	27	Fan wheel	2
13	Chassis	1	28	Fan motor	1
14	Left clapboard	1	29	Wind guider for volute shell	4

15	wired-crossing board	1	30	Volute shell	2
16	Cover for right clapboard	1	31	Rear clapboard	1
17	Capacitor box	1	32	Indoor temp sensor	1
18	Capacity	1	33	Holder for remote controller	1
19	E-Parts box cover	1	34	Remote controller	1
			35	Electronic Throttle Kit	1

3.10.3 MDV-D90T2/CN1 MDV-D112T2/CN1 MDV-D140T2/CN1



No.	parts name	Quantity	No.	parts name	Quantity
1	Air-out frame ass'y	4	21.1	Electronic part box	1
2	Air-out board ass'y	1	21.2	Wired joint for multiplexer	1
3	Evaporator	1	21.3	wired joint, 3p	1
	Input pipe	1	21.4	Wired joint, 2p	1
	Output pipe	1	21.5	Transformer	1
4	Evaporator temp sensor	1	21.6	Main control board	1
5	Panel ass'y	1	22	Right up fixing clamp for motor	1

6	Air filter	2	23	Right down fixing clamp for motor	1
7	Canvas passage	1	24	Strengthen board for motor	1
8	Base board for evaporator	1	25	Left up fixing clamp for motor	1
9	Water collector	1	26	Left down fixing clamp for motor	1
10	Sealing board for middle beam	3	27	Axis joint	1
11	Cover for middle beam	1	28	Axis	1
12	Middle beam	1	29	Fan wheel	3
13	Chassis	1	30	Bearing	1
14	Left clapboard	1	31	Fan motor	1
15	wired-crossing board	1	32	Wind guider for volute shell	6
16	Right clapboard	1	33	Volute shell	3
17	Cover for right clapboard	1	34	Rear clapboard	1
18	Capacitor box	1	35	Indoor temp sensor	1
19	Capacity	1	36	Holder for remote controller	1
20	E-Parts box cover	1	37	Remote controller	1
21	Electronic control ass'y	1	38	Electronic Throttle Kit	1

3.11 Optional accessories

Number	Item
1	Front clapboard
2	Panel
3	Canvas air passage
4	Filter
5	Wired controller
6	Central controller
7	Net work controller